

Franklin Fueling Systems

Fiberglass Dispenser Sump

Installation Instructions

Introduction

This guide is meant as an installation overview for single wall dispenser sumps and should be used in conjunction with the appropriate part-specific installation instructions. For complete installation and safety information refer to the installation documentation for the equipment described in this guide and any other related equipment. To ensure system integrity and personnel safety, it is essential that all applicable installation instructions and the federal, state, and local codes that supersede them be followed.

The installation instructions that follow are divided into two chapters: General Installation and Retrofit Installation. The Retrofit Installation chapter is for installations where a sump's height will have to be cut down to accommodate an existing site, and therefore requires additional work. FFS recommends following the General Installation whenever possible.

Safety

To ensure your safety, take these precautions when working with fiberglass tanks:

- Wear protective goggles
- Wear a protective mask (painter's mask)
- Use hearing protection
- Protect and avoid skin contact (wear gloves, boots and cover all exposed skin)
- Check with local regulations concerning confined space entry

Tools Required for Installation

- Protective gear: safety glasses, painter's mask, gloves, painter's suit
- Drill with ¼" drill bit
- Circular saw with diamond blade (for cutting sump only)
- Crescent wrench
- Small flathead screwdriver
- Permathane sealant and caulk gun (not supplied by FFS)
- Tape measure
- Marking pen

Notice

Franklin Fueling Systems (FFS) strives to produce the finest manual possible and to ensure that the information that it contains is complete and accurate. However, FFS reserves the rights to change this document and specifications at any time without notice. FFS makes no expressed or implied warranty with regard to the contents of this manual. FFS assumes no liability for errors, omissions or for any damages, direct or consequential, that may result from the use of this document or the equipment that it describes.

Inspection of Materials

Visually inspect all components for defects or damage prior to installation. If any defect or damage is found, do not use the product and contact Franklin Fueling Systems for further assistance.

Warranty Information

Please refer to the *FFS Fuel Management Systems & Product Warranty Policy* for all warranty information.

Contacting Franklin Fueling Systems (FFS)

Please feel free to contact us by mail at:

Franklin Fueling Systems
3760 Marsh Rd.
Madison, WI 53718 USA

Or contact us by phone, fax or e-mail:

Tel: +1 800 225 9787 **E-mail:** sales@franklinfueling.com
Fax: +1 608 838 6433 techserve@franklinfueling.com
Office and Sales Hours: 8 A.M. to 5 P.M. CST - Monday through Friday
Technical Support Hours: 7 A.M. to 7 P.M. CST - Monday through Friday

Please visit our website at www.franklinfueling.com

General Installation

1. Install the metal sump top onto the fiberglass sump bottom.
2. From the outside of the sump, use a ¼" drill bit to drill through the eight guide holes on the face of the metal sump top. There are four guide holes on each side of the face of the metal sump top. *Do not drill completely through the opposite side of the metal frame.*



Figure 1 - Drilling into Metal Frame

3. Remove the metal sump top.
4. Install the provided clips over the eight drilled holes on the fiberglass sump bottom.

Note: The clip has a flat side and a threaded side. Install the clip so that the flat side is on the outside of the sump and the threaded side is on the inside of the sump.

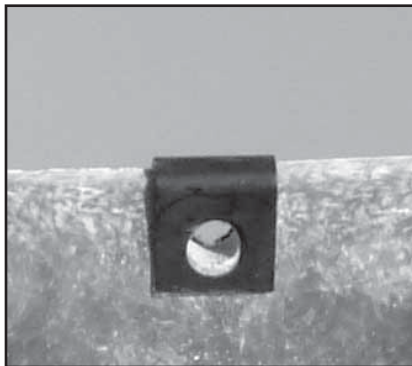


Figure 2 - Flat Side



Figure 3 - Threaded Side

5. Apply a small bead of permathane sealant around the edge of the entire fiberglass sump bottom.

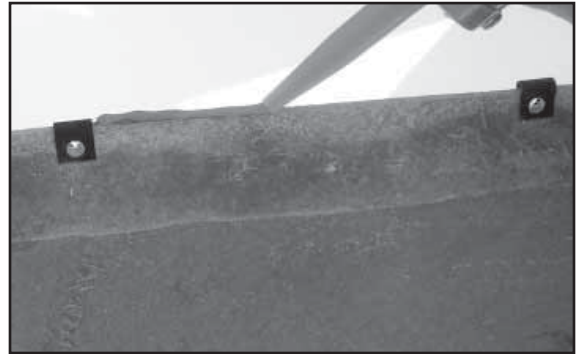


Figure 4 - Applying Sealant

6. Re-install the metal sump top onto the fiberglass sump bottom so that the guide holes on the metal sump top align with the clip holes on the fiberglass sump bottom.

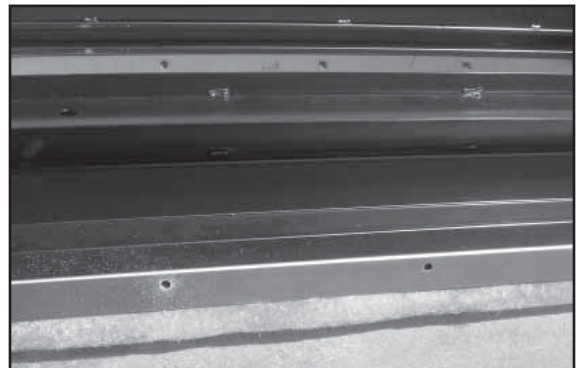


Figure 5 - Matching Up Guide Holes

7. Install the eight ¼" bolts into the above mentioned holes to secure the sump top to the fiberglass bottom.



Figure 6 - Tightening Bolts

Note: Do not use the supplied washers or nuts on this step of the installation. The washers and nuts will be utilized when bolting the ends of the fiberglass sump to the end of the metal sump top.

8. From the inside of the sump use the 1/4" drill bit and drill through the four guide holes on the ends of the metal sump top. There are two guide holes at each end of the metal sump top. Drill through the metal layer and the fiberglass layer.



Figure 7 - Drilling from the Inside of the Sump

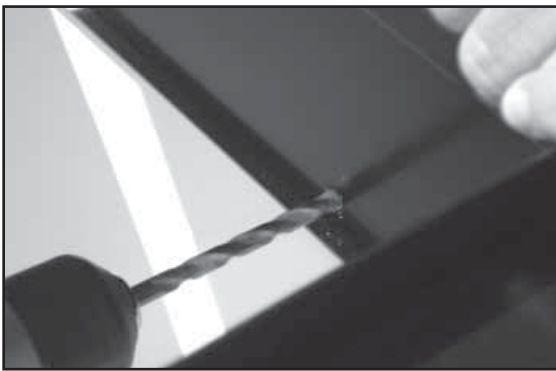


Figure 8 - Drilling into Sump Top

9. Once all four holes have been drilled, insert the supplied 1/4" bolt with sealed washer from the outside of the sump and use the supplied nut and sealed washer on the inside of the sump and tighten them together.



Figure 9 - Tightening Bolts

10. Seal the metal sump top to the fiberglass sump bottom with a bead of permathane sealant around the entire sump where the sump top meets the sump bottom.

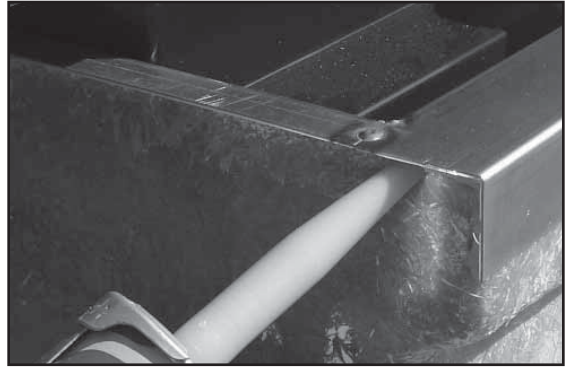


Figure 10 - Applying Sealant to Sump Top



Figure 11 - Applying Sealant to Sump Top

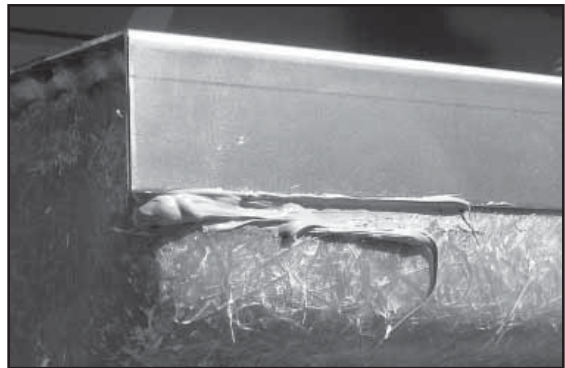


Figure 12 - Applying Sealant to Sump Top

11. Apply a small amount of permathane sealant around the bolt head and nut mentioned in Step 9.

Retrofit Installation

1. Using a tape measure, measure from the top of the fiberglass sump down to the required sump height and mark the sump with a marker frequently in order to obtain a straight and accurate cut.

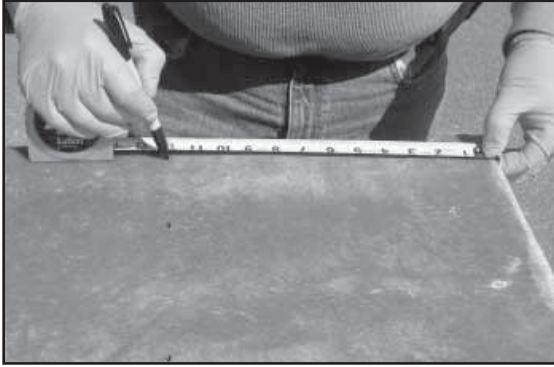


Figure 13 - Measuring Required Sump Height

2. Use a marker and draw a line around the entire sump to ensure a level and accurate cut.

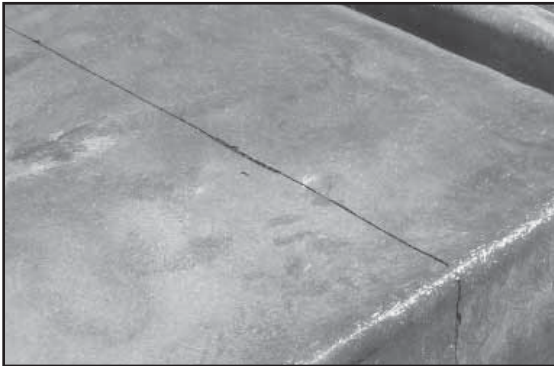


Figure 14 - Marked Sump

3. Use a circular saw with a diamond blade to make the cut around the entire sump to achieve the correct sump height.



Figure 15 - Cutting Down Sump

Note: An accurate and level cut is essential to ensure that the metal sump top will install properly on the fiberglass sump bottom.

4. After the cut has been made, dust the fiberglass sump clean of any debris or fiberglass particles that may interfere with the metal sump top attaching to the fiberglass sump bottom.



Figure 16 - Reduced Sump

5. Install the metal sump top onto the fiberglass sump bottom.



Figure 17 - Installing Metal Top

- From the outside of the sump, use a 1/4" drill bit to drill through the eight guide holes on the face of the metal sump top. There are four guide holes on each side of the face of the metal sump top. Drill completely through the fiberglass layer and both sides of the metal frame.

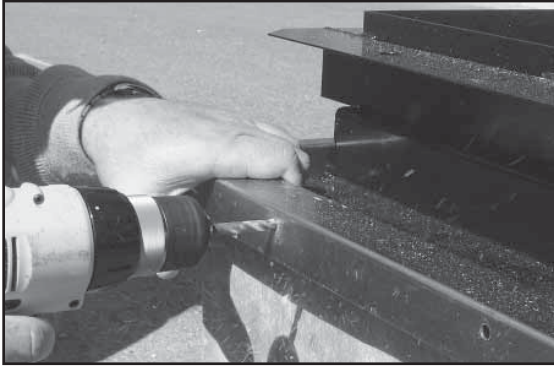


Figure 18 - Drilling Through Guide Holes



Figure 19 - Drilling Through Metal Frame

- Remove the metal sump top and install the provided clips over the eight drilled holes on the fiberglass sump bottom. If the clip does not fit over the fiberglass wall, use a screwdriver to pry the clip apart.



Figure 20 - Prying Clip Apart

Note: The clip has a threaded side and a flat side. Install the clip so that the threaded side is on the outside of the sump and the flat side is on the inside of the sump.

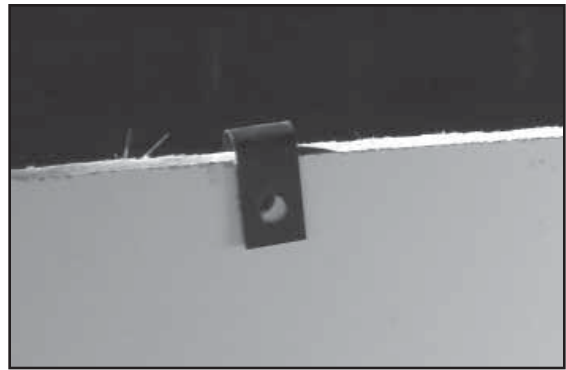


Figure 21 - Flat Side of Clip

- Apply a small bead of permathane sealant around the edge of the entire fiberglass sump bottom.

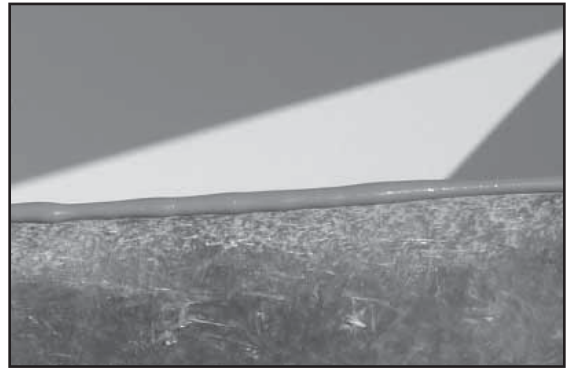


Figure 22 - Applying Sealant

- Re-install the metal sump top onto the fiberglass sump bottom so that the guide holes on the metal sump top align with the clip holes on the fiberglass sump bottom.

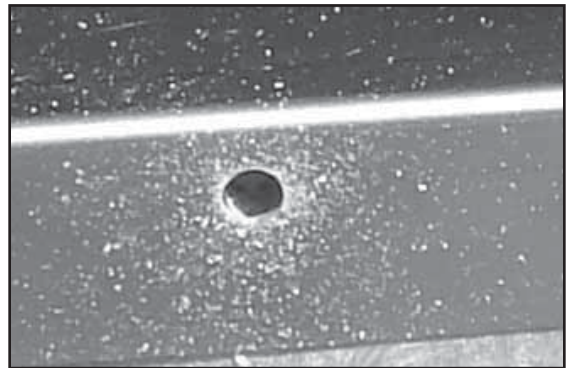


Figure 23 - Aligning Guide Holes

10. Install the eight ¼" bolts into the above mentioned holes to secure the sump top to the fiberglass bottom. Install the ¼" bolts from inside the metal sump top frame to the outside of the fiberglass sump bottom.

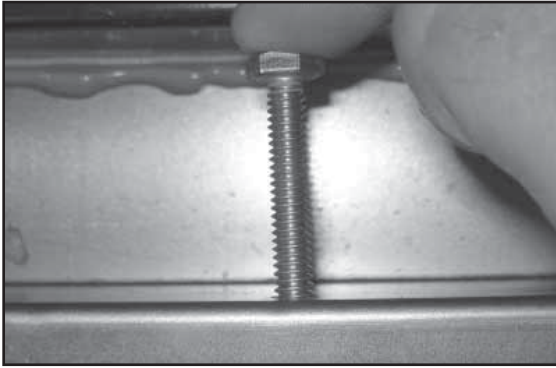


Figure 24 - Installing Bolts

Note: Do not use the supplied washers or nuts on this step of the installation. The washers and nuts will be used when bolting the ends of the fiberglass sump to the end of the metal sump top.

11. From the inside of the sump use the ¼" drill bit and drill through the four guide holes on the ends of the metal sump top. There are two guide holes on each end of the metal sump top. Drill through the metal layer and the fiberglass layer.

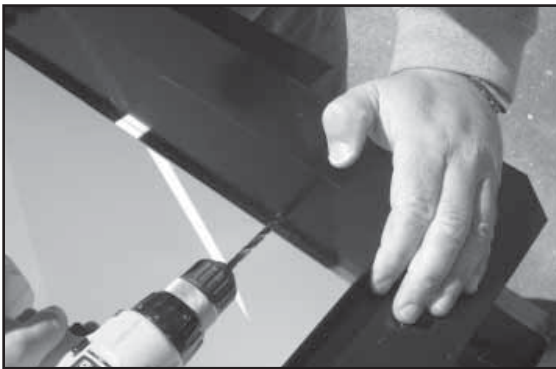


Figure 25 - Drilling from the Inside of the Sump

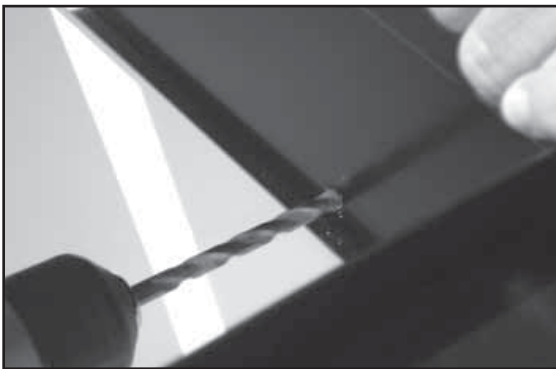


Figure 26 - Drilling into Sump Top

12. Once all four holes have been drilled, insert the supplied ¼" bolt with sealed washer from the outside of the sump and use the supplied nut and sealed washer on the inside of the sump and tighten them together.



Figure 27 - Tightening Bolts

13. Seal the metal sump top to the fiberglass sump bottom with a bead of permathane sealant around the entire sump where the sump top meets the sump bottom.



Figure 28 - Applying Sealant to Sump Top

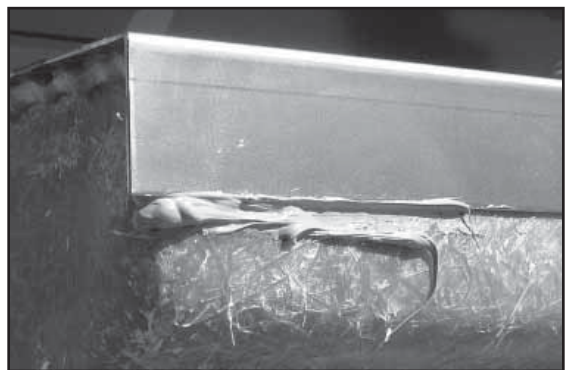


Figure 29 - Applying Sealant to Sump Top

14. Apply a small amount of permathane sealant around the bolt head on the outside of the sump and the nut on the inside of the sump mentioned in Step 12.



Franklin Fueling Systems

www.franklinfueling.com

3760 Marsh Road • Madison, WI 53718, U.S.A.

Tel: +1 608 838 8786 • Fax: +1 608 838 6433

Tel: USA & Canada 1 800 225 9787 • Tel: México 001 800 738 7610

Franklin Fueling Systems GmbH

Rudolf-Diesel-Strasse 20 • 54516 Wittlich, GERMANY

Tel: +49-6571-105-380 • Fax: +49-6571-105-510