

ABCEG

Diesel Engine Driven

# Self Priming Centrifugal Pump

## Model 82D1-L48EE-X

### Size 2" x 2"



Total Head		Capacity Of Pump in U.S. Gallons Per Minute (GPM) at Continuous Performance				
P.S.I.	Feet					
39.0	90	34	34	34	34	34
34.7	80	65	75	75	75	75
30.3	70	79	96	100	100	100
26.0	60	84	107	118	118	118
21.7	50	87	111	130	134	134
17.3	40	91	115	135	147	147
13.0	30	93	119	139	155	162
8.7	20	97	123	143	162	171
<b>Suction Lift</b>		<b>25'</b>	<b>20'</b>	<b>15'</b>	<b>10'</b>	<b>5'</b>



#### PUMP SPECIFICATIONS

- Size:** 2" x 2" NPT (51 mm x 51 mm) - Female.
- Pump Casing:** Aluminum No. 356-T6 with Gray Iron No. 30 Cutwater Insert.  
Maximum Operating Pressure 62 psi (427 kPa).\*
- Open Type, Three Vane Impeller:** Aluminum No. 356-T6.  
Handles 5/8" (15,8 mm) Diameter Spherical Solids.
- Replaceable Wear Plate:** Carbon Steel M1026.
- Intermediate Bracket:** Gray Iron No. 30.
- Seal:** Type 21, Mechanical, Self-Lubricated. Carbon Rotating Face. Ni-Resist Stationary Face. Fluorocarbon Elastomers (DuPont Viton® or Equivalent). Stainless Steel No. 18-8 Cage and Spring. Maximum Temperature of Liquid Pumped, 160°F (71°C).\*
- Shaft Sleeve:** Stainless Steel No. 304.
- Flap Valve:** Buna-N w/Nylon Reinforcement, Gray Iron No. 30 and Sintered Powdered Steel.
- Flange:** Gray Iron No. 30.
- Gaskets:** Vegetable Fiber.
- Hardware:** Standard Plated Steel.
- Standard Equipment:** 90° Ductile Iron Discharge Elbow. Rollover Base with Rubber Feet.
- Optional Equipment:** Two Wheel Truck Assembly with 10.00" x 2.75" (254 mm x 70 mm) Semi-Pneumatic Tires.

**Optional Equipment:** Two Wheel Truck Assembly with 10.00" x 2.75" (254 mm x 70 mm) Semi-Pneumatic Tires.

*\*Consult Factory for Applications Exceeding Maximum Pressure and/or Temperature Indicated.*

WARNING!

This unit is designed to handle volatile, flammable liquids. To reduce the risk of fire or explosion, do not operate near open flames, sparks, cigarettes or any other ignition source. Do not operate the unit in an explosive atmosphere or unventilated area. Connect the attached ground cable to the nearest grounding point on the tank being filled. Shut off the engine and allow it to completely cool before refueling.

#### ENGINE SPECIFICATIONS

- Model:** Yanmar L48EE.
- Type:** Four Cycle, Air Cooled, Diesel Engine.
- Displacement:** 13.4 Cu. In. (219 cc).
- Governor:** Variable Speed, Engine Mounted.
- Oil Reservoir:** 0.85 U.S. Qts. (0,8 liter).
- Air Cleaner:** Dry Type.
- Fuel Tank:** 0.66 U.S. Gal. (2,5 liter).
- Full Load Operating Time:** 1.8 Hrs.
- Starter:** Rope Rewind.

**Standard Features:** Muffler Heat Shield and Fuel Splash Guard. 90° Exhaust Deflector. Exhaust Silencer Muffler w/Guard. Tool Kit. Grounding Wire.

#### YANMAR PUBLISHED PERFORMANCE

Maximum Continuous 4.2 BHP (3.1 kW) @ 3600 RPM  
Maximum Dynamic 4.7 BHP (3,5 kW) @ 3600 RPM



COURTESY OF  
**MASCOTT EQUIPMENT COMPANY**  
Portland    Seattle    Tri-Cities  
[www.mascottec.com](http://www.mascottec.com)

Printed in U.S.A.

**Specification Data**

**SECTION 20, PAGE 200**

APPROXIMATE  
DIMENSIONS and WEIGHTS

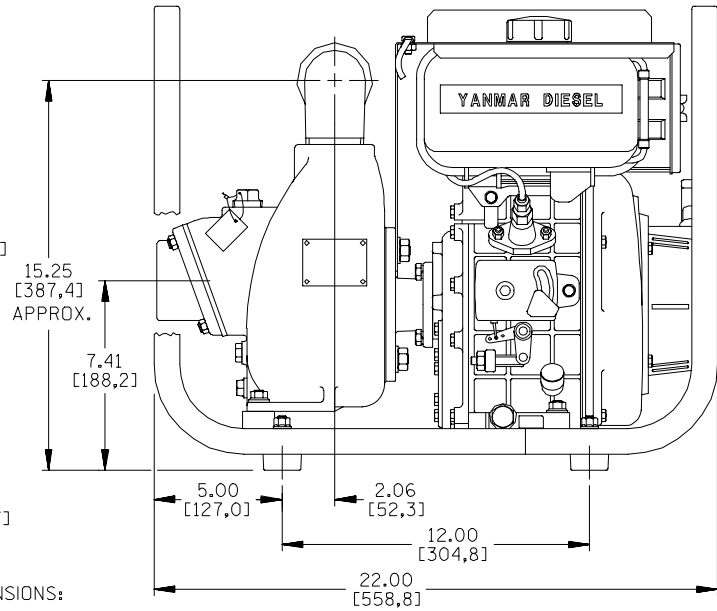
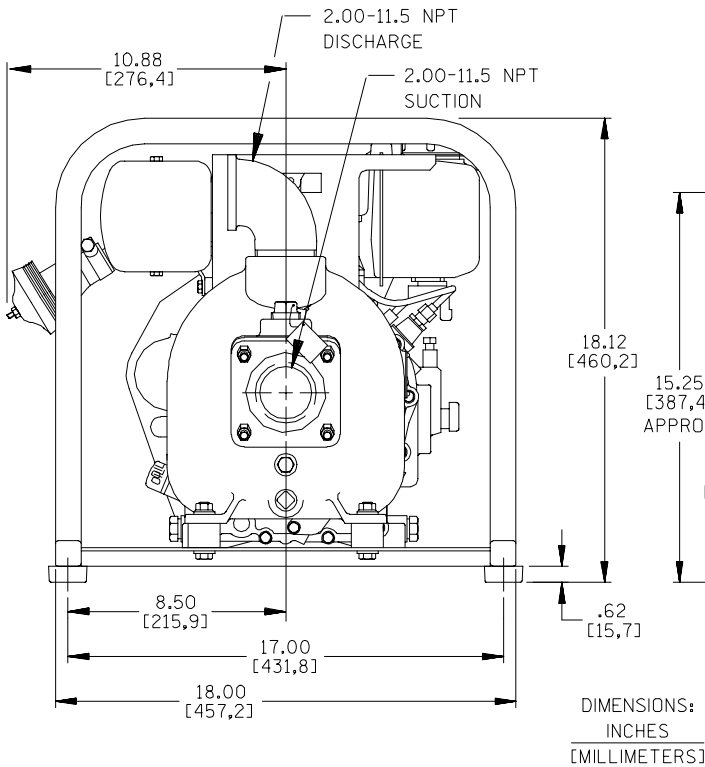
**NET WEIGHT: 97 LBS. (44,0 KG.)**

**SHIPPING WEIGHT: 123 LBS. (55,8 KG.)**

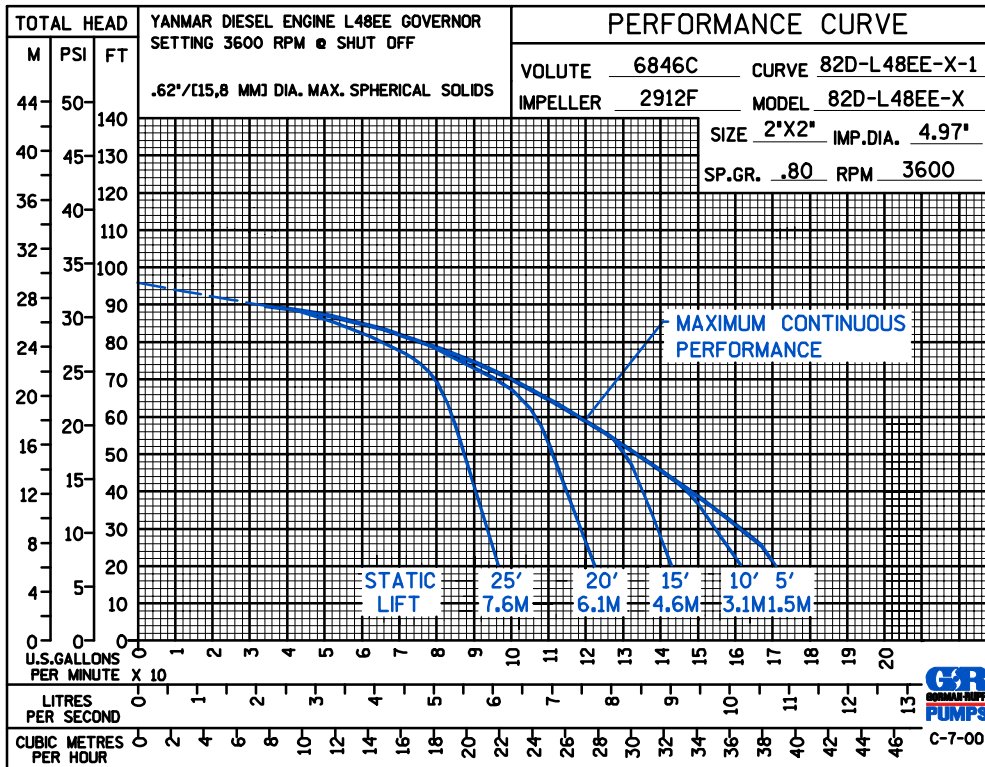
**EXPORT CRATE SIZE: 5.6 CU. FT. (0,16 CU. M.)**

WHEEL KIT ADD 22 LBS. (10 KG.); SHIPPING CRATE (SEPARATE) 3 CU. FT. (0,1 CU. M.)

POWERED BY YANMAR L48EE DIESEL ENGINE



DIMENSIONS:  
INCHES  
[MILLIMETERS]



Mascott Equipment Co  
Portland Seattle Pasco  
(800) 452-5019 (800) 481-7311 (888) 450-7867

Printed in U.S.A.