

A B C D E

Basic Pedestal

Self Priming Centrifugal Pump

Models 83C3-B and 83C52-B

Size 3" x 3"

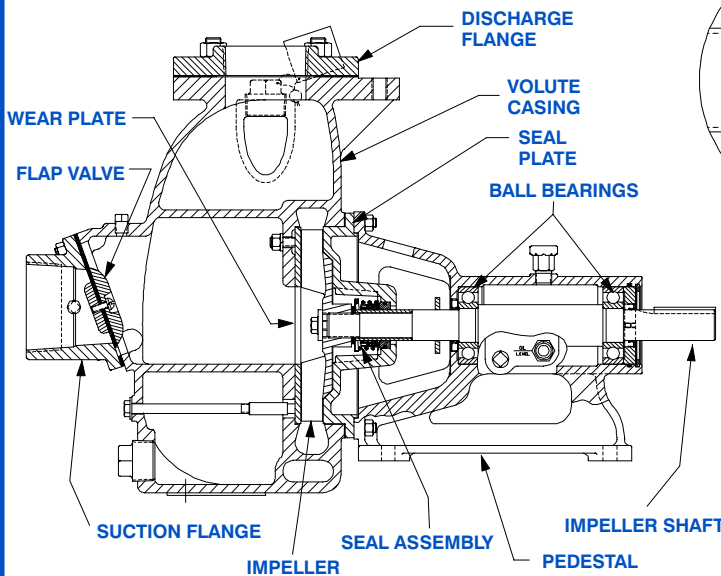


PUMP SPECIFICATIONS

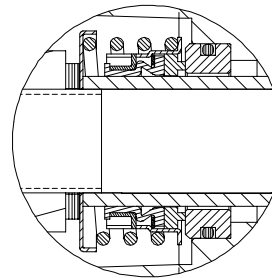
- Size:** 3" x 3" (76 mm x 76 mm) NPT - Female.
- Casing:** Gray Iron No. 30.
Maximum Operating Pressure 85 psi (586 kPa)*.
- Semi-Open Type, Four Vane Impeller:** Gray Iron No. 30.
Handles 7/8" (22 mm) Diameter Spherical Solids.
- Impeller Shaft:** Carbon Steel No. 1045.
- Replaceable Wear Plate:** Carbon Steel No. 1026.
- Pedestal:** Gray Iron No. 30.
- Seal Plate:** Gray Iron No. 30.
- Shaft Sleeve:** Alloy Steel No. 4130.
- Flap Valve:** Buna-N w/Nylon Reinforcement and Gray Iron No. 30.
- Radial and Thrust Bearings:** Open Single Row Ball.
- Bearing Lubrication:** SAE No. 30 Non-Detergent Oil.
- Flanges:** Gray Iron No. 30.
- Gaskets:** Cork and Vegetable Fiber.
- O-Rings:** Buna-N
- Hardware:** Standard Plated Steel and Stainless Steel.
- Oil Level Sight Gauge.**
- Optional Equipment:** Consult Factory.



**Consult Factory for Applications Exceeding Maximum Pressure and/or Temperature Indicated.*



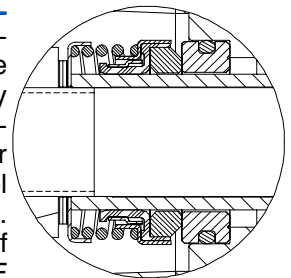
83C3-B SHOWN



83C3-B SEAL DETAIL Type 2, Mechanical, Self-Lubricated. Carbon Rotating Face. Ni-Resist Stationary Face. Fluorocarbon Elastomers (DuPont Viton® or Equivalent). Stainless Steel No. 18-8 Cage and Spring. Maximum Temperature of Liquid Pumped, 160°F (71 °C).*

83C52-B SEAL DETAIL

Type 31, Mechanical, Self-Lubricated. Silicon Carbide Rotating and Stationary Faces. Fluorocarbon Elastomers (DuPont Viton® or Equivalent). Stainless Steel No. 18-8 Cage and Spring. Maximum Temperature of Liquid Pumped 160°F (71°C).*



COURTESY OF
MASCOTT EQUIPMENT COMPANY
Portland Seattle Tri-Cities
www.mascottec.com

Specification Data

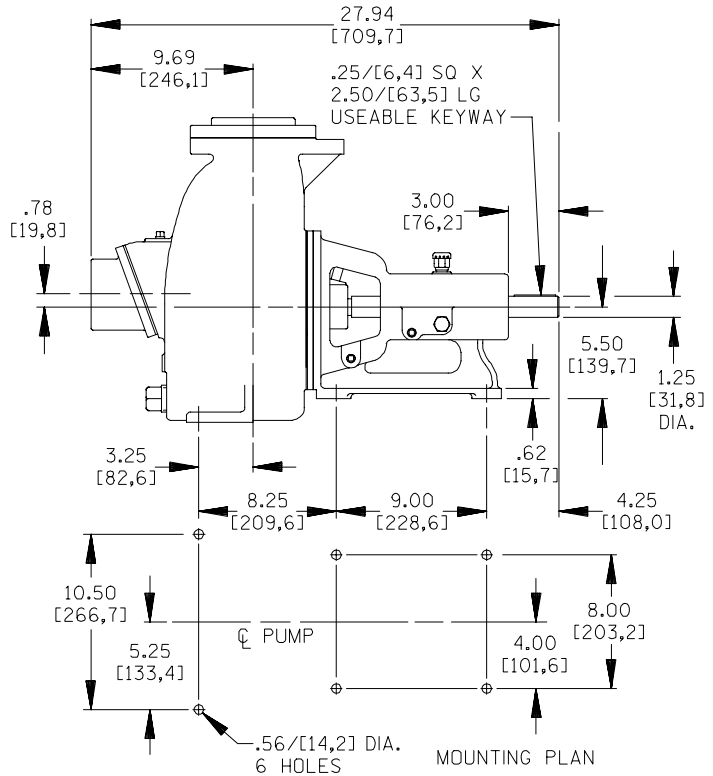
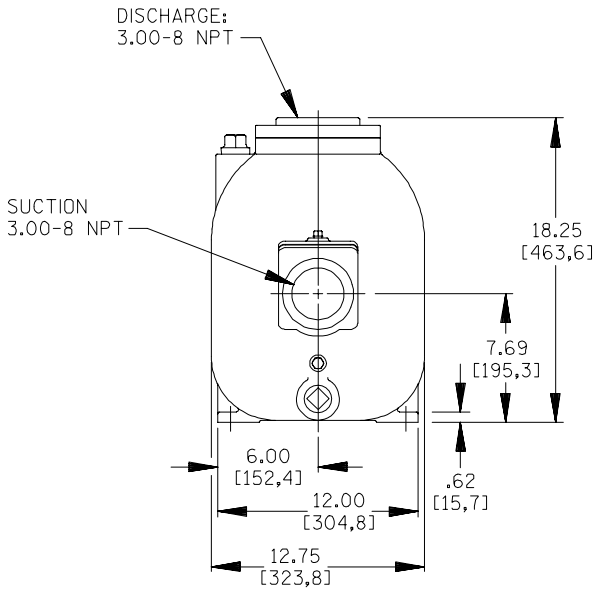
SECTION 50, PAGE 1601

APPROXIMATE
DIMENSIONS and WEIGHTS

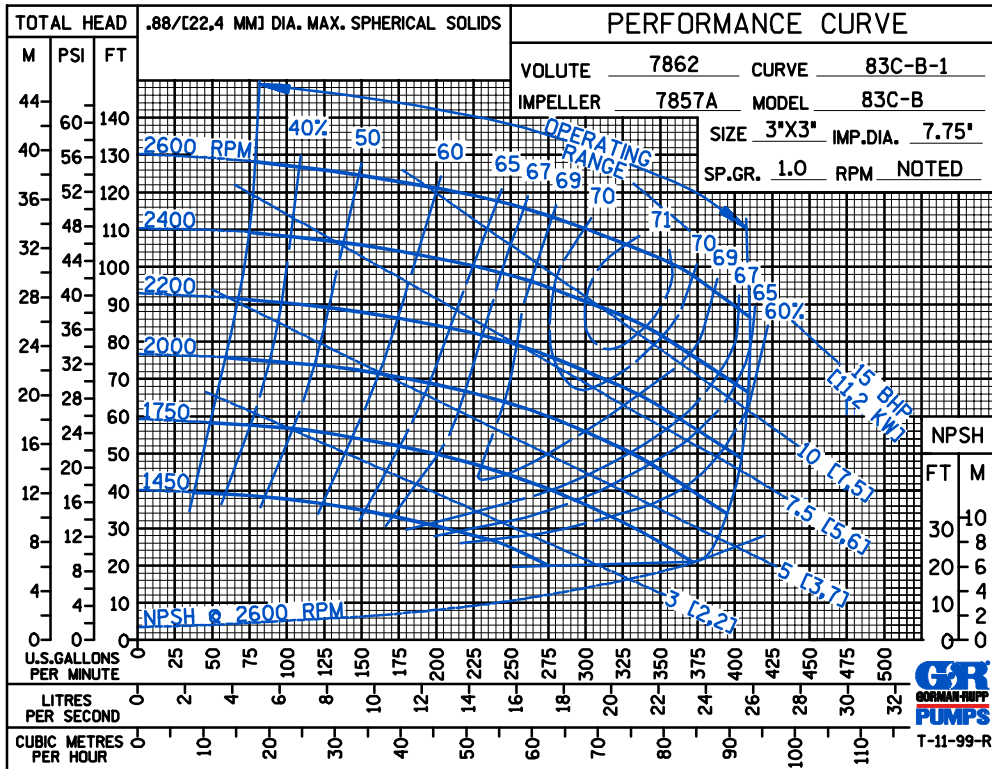
NET WEIGHT: 190 LBS. (86,2 KG.)

SHIPPING WEIGHT: 200 LBS. (90,7 KG.)

EXPORT CRATE: 12.7 CU. FT. (0,36 CU. M.)



DIMENSIONS:
INCHES
[MILLIMETERS]



Specifications Subject to Change Without Notice

Printed in U.S.A.