

BCE

## Basic Pedestal

## Self Priming Centrifugal Pump



Model 04B3-B

Size 4" x 4"

## PUMP SPECIFICATIONS

**Size:** 4" x 4" (102 mm x 102 mm) NPT – Female.

**Casing:** Gray Iron No. 30.

Maximum Operating Pressure 260 psi (1793 kPa).\*

**Enclosed Type, Five Vane Impeller:** Copper Alloy C83600.

Handles 1/2" (12,7 mm) Diameter Spherical Solids.

**Impeller Shaft:** Alloy Steel No. 4150.

**Replaceable Wear Rings:** Gray Iron No. 30.

**Removable Cleanout Cover:** Gray Iron No. 30.

Weight 3 lbs. (1,4 kg.).

**Pedestal:** Gray Iron No. 30.

**Pedestal Foot:** Gray Iron No. 30.

**Seal Plate:** Gray Iron No. 30.

**Shaft Sleeve:** Alloy Steel 4130.

**Radial Bearing:** Single Row Ball Type.

**Thrust Bearing:** Double Row Ball Type.

**Bearing Lubrication:** SAE No. 30 Non-Detergent Oil.

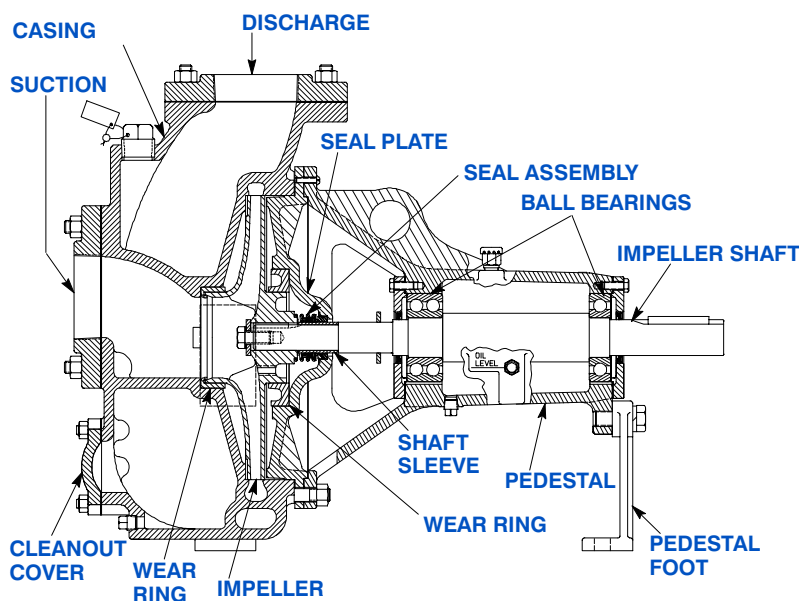
**Flanges:** Gray Iron No. 30.

**Gaskets:** Cork <sup>w</sup>/Nitrile Binder NC710 and Vegetable Fiber.

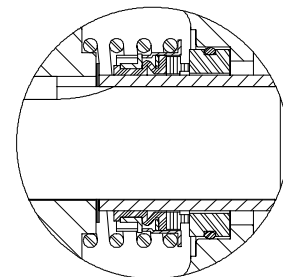
**Hardware:** Standard Plated Steel.

**Oil Level Sight Gauge.**

*\*Consult Factory for Applications Exceeding Maximum Pressure and/or Temperature Indicated.*



## SEAL DETAIL



## 04B3-B SEAL SPECIFICATIONS

Type 2, Mechanical Self-Lubricated. Carbon Rotating Face. Ni-Resist Stationary Face. Fluorocarbon Elastomers (DuPont Viton<sup>®</sup> or Equivalent). Stainless Steel No. 18-8 Cage and Spring. Maximum Temperature of Liquid Pumped, 160°F [71°C].\*



COURTESY OF  
MASCOTT EQUIPMENT COMPANY  
Portland Seattle Tri-Cities  
[www.mascottec.com](http://www.mascottec.com)

Printed in U.S.A.

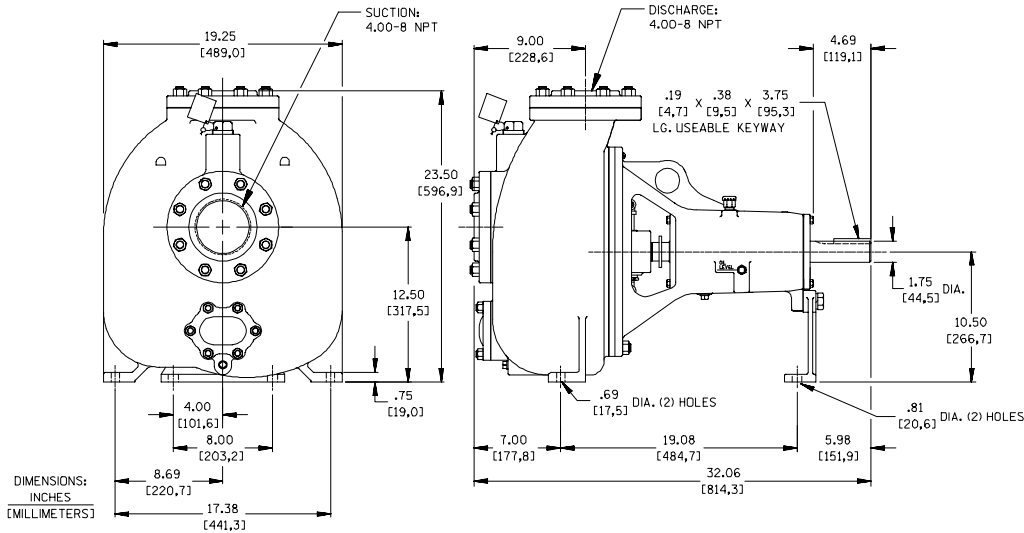
**Specification Data**

SECTION 30, PAGE 1800

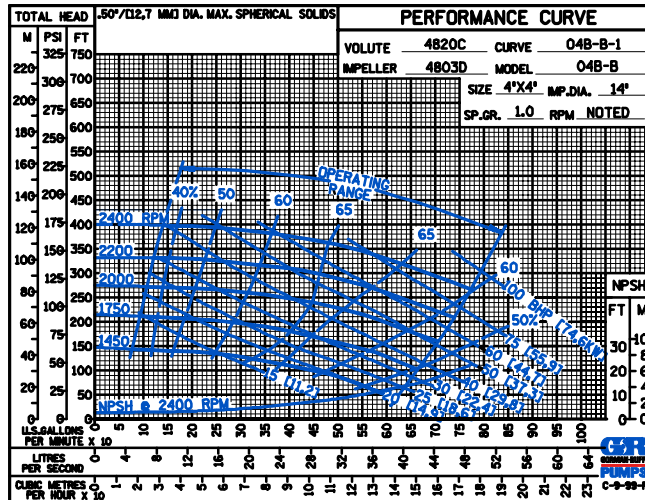
APPROXIMATE DIMENSIONS and WEIGHTS

NET WEIGHT:  
SHIPPING WEIGHT:  
EXPORT CRATE:

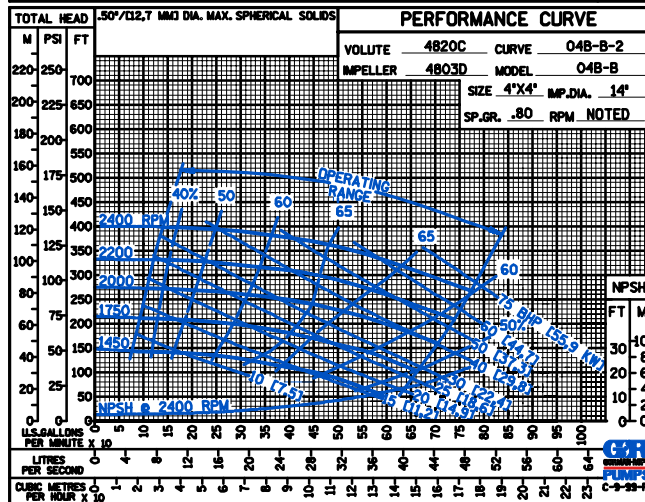
420 LBS. (190 KGS.)  
462 LBS. (210 KGS.)  
17.4 CU. FT. (0,5 CU. M.)



PERFORMANCE  
BASED ON  
WATER



PERFORMANCE  
BASED ON  
PETROLEUM



THE GORMAN-RUPP COMPANY • MANSFIELD, OHIO

GORMAN-RUPP OF CANADA LIMITED • ST. THOMAS, ONTARIO, CANADA

Specifications Subject to Change Without Notice

Printed in U.S.A.