

BCE

Basic Pedestal



Self Priming Centrifugal Pump

Models 06B3-B

Size 6" x 6"

PUMP SPECIFICATIONS**Size:** 6" x 6" (152 mm x 152 mm) NPT - Female.**Casing:** Gray Iron No. 30.

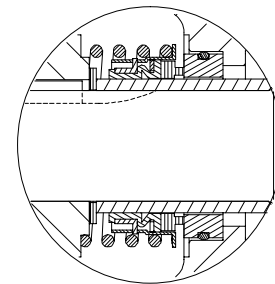
Maximum Operating Pressure 163 psi (1121 kPa).*

Enclosed Type, Five Vane Impeller: Copper Alloy C83600.

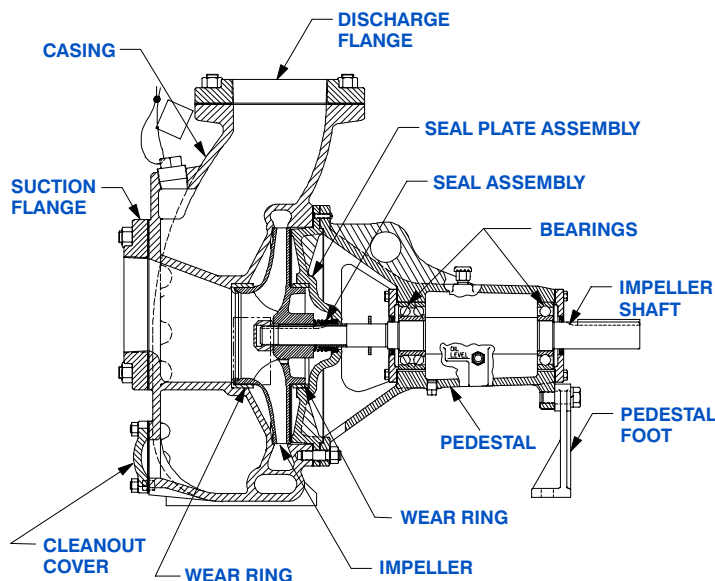
Handles 5/8" (15,8 mm) Diameter Spherical Solids.

Impeller Shaft: Alloy Steel No. 4150.**Replaceable Wear Rings:** Gray Iron No. 40.**Removable Cleanout Cover:** Gray Iron No. 30.

Weight 3 lbs. (1,4 kg.).

Pedestal: Gray Iron No. 30.**Pedestal Foot:** Gray Iron No. 30.**Seal Plate:** Gray Iron No. 30.**Shaft Sleeve:** Alloy Steel 4130.**Radial Bearing:** Open Single Row Ball.**Thrust Bearing:** Open Double Row Ball.**Bearing Lubrication:** SAE No. 30 Non-Detergent Oil.**Gaskets:** Cork ^w/Nitrile Binder NC710 and Vegetable Fiber.**Flanges:** Gray Iron No. 30.**Hardware:** Standard Plated Steel.**Oil Level Sight Gauge.****Optional Equipment:** All Iron Construction.**Consult Factory for Applications Exceeding Maximum Pressure and/or Temperature Indicated.***SEAL DETAIL****SEAL SPECIFICATIONS**

Type 2, Mechanical Self-Lubricated. Carbon Rotating Face. Ni-Resist Stationary Face. Fluorocarbon Elastomers (DuPont Viton[®] or Equivalent). Stainless Steel No. 18-8 Cage and Spring. Maximum Temperature of Liquid Pumped, 160°F [71°C].*



COURTESY OF
MASCOTT EQUIPMENT COMPANY
 Portland Seattle Tri-Cities
www.mascottec.com

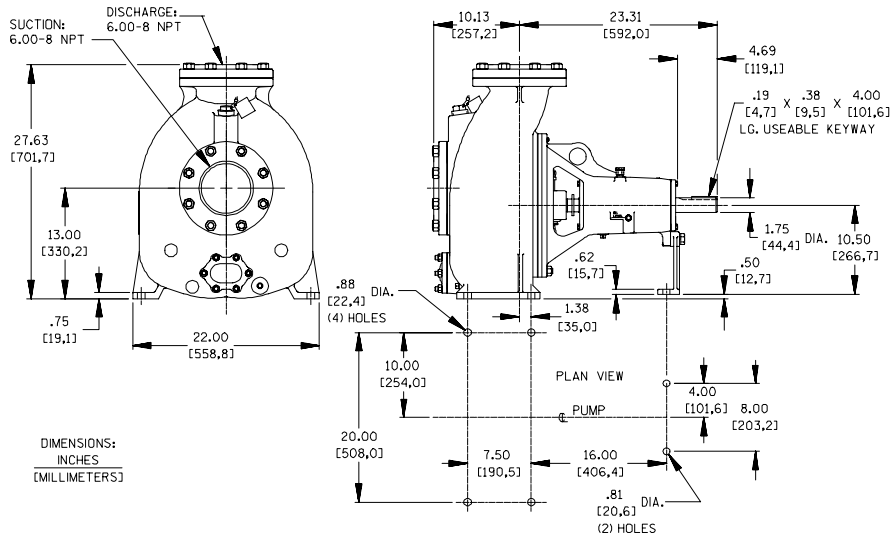
Specification Data

SECTION 30, PAGE 1900

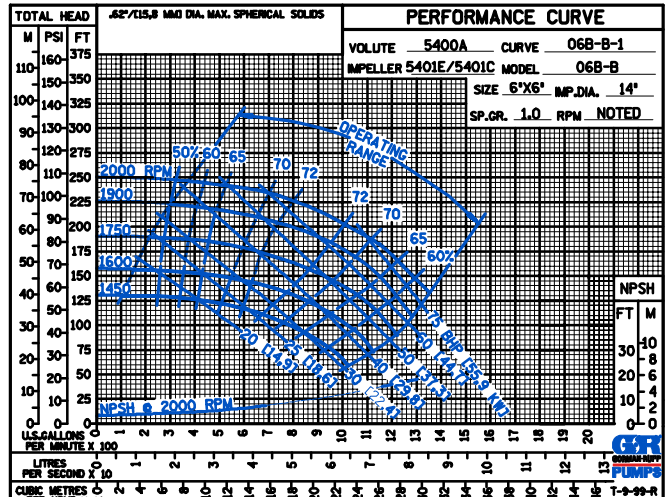
APPROXIMATE
DIMENSIONS and WEIGHTS

NET WEIGHT:
SHIPPING WEIGHT:
EXPORT CRATE:

493 LBS. (223 KG.)
555 LBS. (251 KG.)
22.9 CU. FT. (0,65 CU. M.)



PERFORMANCE
BASED ON
WATER



PERFORMANCE
BASED ON
PETROLEUM

