

B

Basic Pump



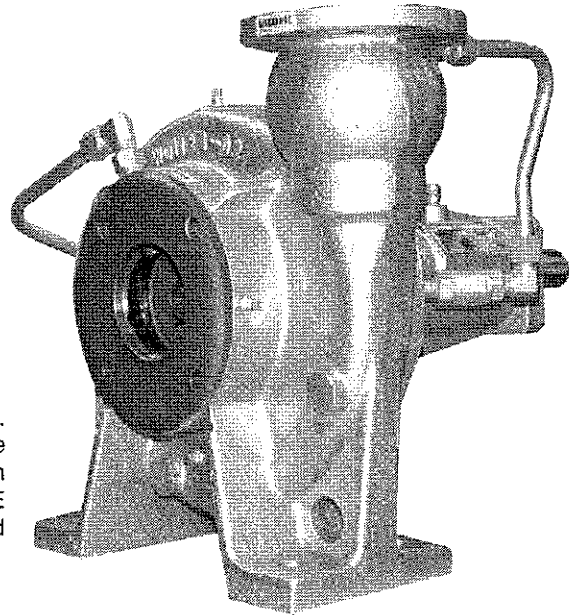
Self Priming Centrifugal Pump

Model RD2A31 – B

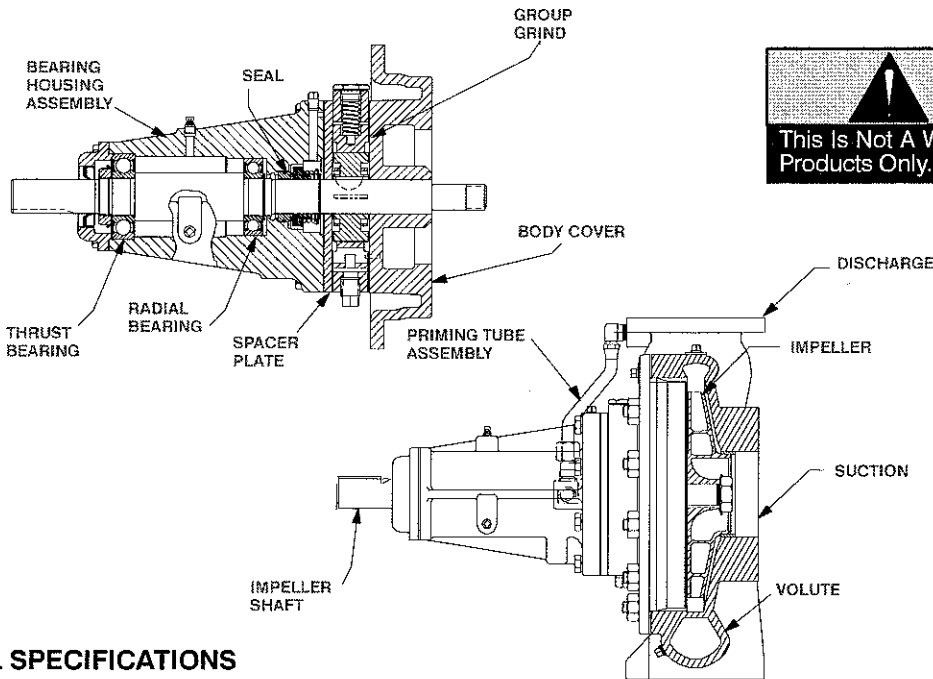
Size 3" x 2"

PUMP SPECIFICATIONS

Size: 3" x 2" (76 mm x 51 mm) Flanged.
 Casing: Ductile Iron No. 65-45-12.
 Maximum Operating Pressure 144 psi (993 kPa). *
 Enclosed Type, Four Vane Impeller: Aluminum 356-T6.
 Handles 1/4" (6,4 mm) Diameter Spherical Solids.
 Impeller Shaft: Steel No.1045.
 Rotor: Copper Alloy C93200.
 Bearing Housing: Ductile Iron No. 65-45-12.
 Bearing Housing Lubrication: Grease.
 Body Cover: Ductile Iron No. 65-45-12.
 Center/Spacer Plate: Ductile Iron No. 65-45-12.
 Radial Bearing: Permanently Sealed Single Row Ball Type.
 Thrust Bearing: Permanently Sealed Single Row Ball Type.
 Gaskets: Vegetable Fiber, PTFE and Cork.
 Priming: Rotary Vane Type, with Built-in Spring-Loaded Priming Assist Valve.
 Optional Equipment: Cast Steel 70-36 Threaded Suction and Discharge Companion Flange Kit, Copper Alloy C93700 Impeller, Group Grind with Cast Iron Rotor; Stainless Steel No. 416 Impeller Shaft; Buna-N Seal, PTFE Seal with Fluorocarbon O-Ring, PTFE Seal with Buna-N O-Ring, Oil Filled Bearing Housing Assembly.

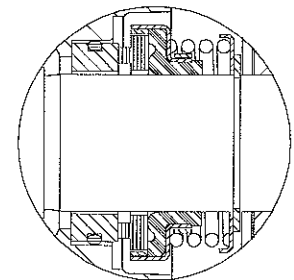


*Consult Factory for Applications Exceeding Maximum Pressure and/or Temperature Indicated.



CAUTION
 This Is Not A Water Pump. Use For Petroleum Products Only.

SEAL AREA DETAIL



SEAL SPECIFICATIONS

Seal: Mechanical; Self-Lubricated. Fluorocarbon Elastomers (DuPont Viton® or Equivalent). Carbon Rotating Face; Ni-Resist Stationary Face; Maximum Temperature of Liquid Pumped is 160°F (71°C).*



COURTESY OF
MASCOTT EQUIPMENT COMPANY
 Portland Seattle Tri-Cities
www.mascottec.com

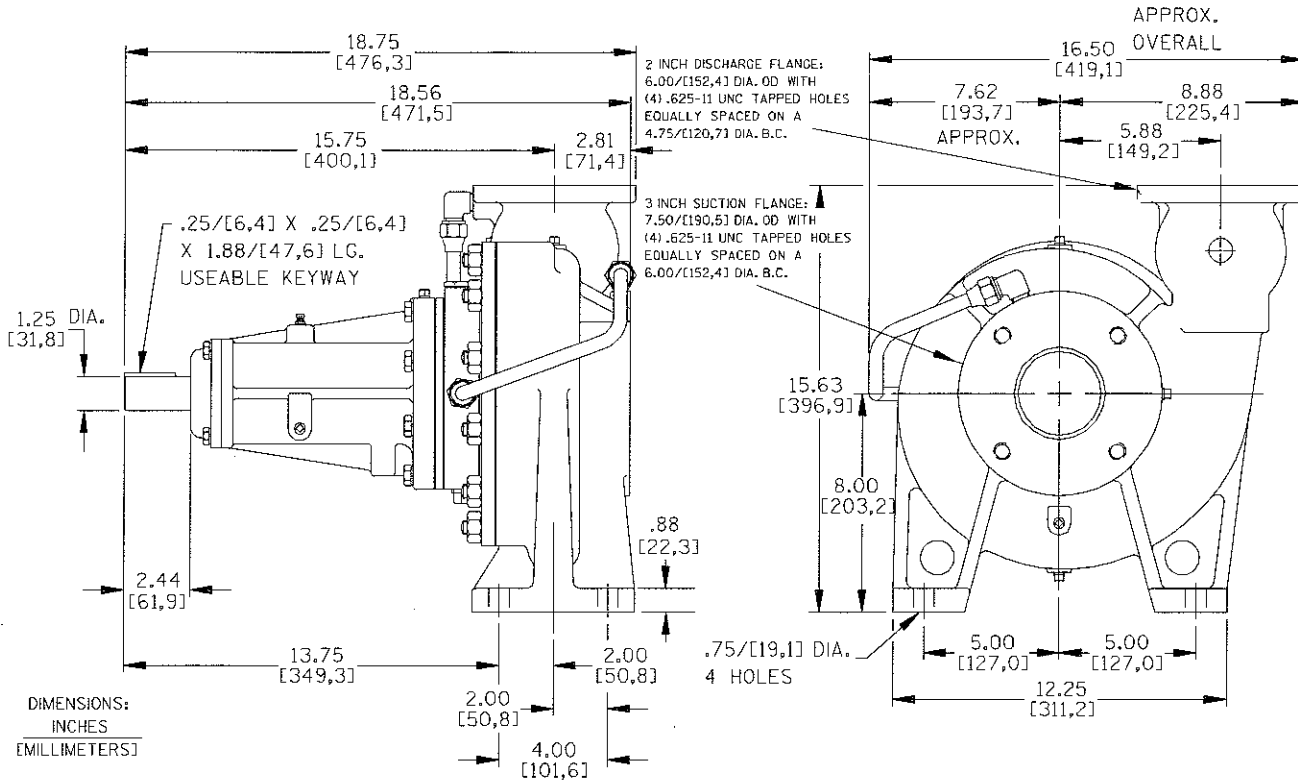
Printed in U.S.A.

Specification Data

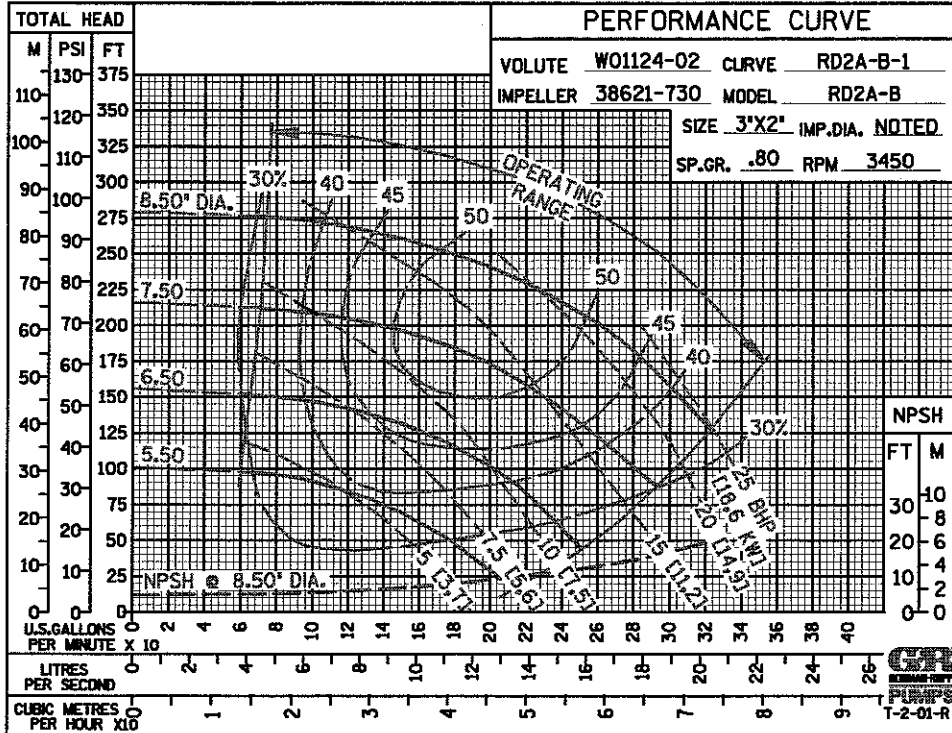
SECTION 35, PAGE 200

OVERALL DIMENSIONS
and
APPROXIMATE WEIGHTS

PUMP NET WEIGHT: 154 LBS. (69,9 KG.)
SHIPPING WEIGHT: 166 LBS. (75,3 KG.)
EXPORT CRATE SIZE: 5.6 CU. FT. (0,16 CU. M.)



Air Release Valve Required When Static Discharge Pressure Exceeds 8 psi (55 kPa).



THE GORMAN-RUPP COMPANY • MANSFIELD, OHIO

GORMAN-RUPP OF CANADA LIMITED • ST. THOMAS, ONTARIO, CANADA

Specifications Subject to Change Without Notice

Printed in U.S.A.