

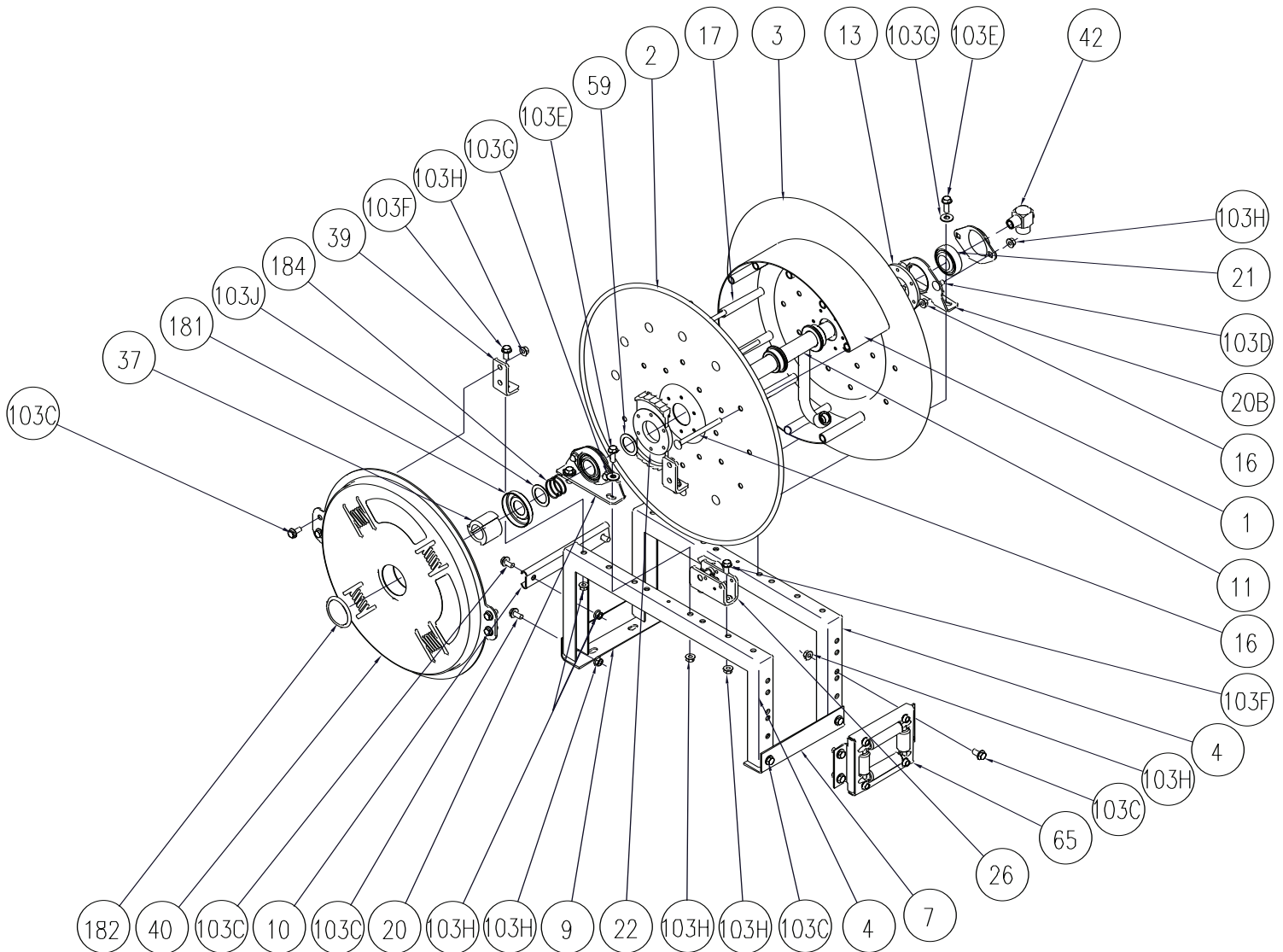


Hannay Reels®

The reel leader.

Hannay Reels, Inc., 553 State Route 143
Westerlo, NY 12193-0159
Telephone 518-797-3791 • Toll Free 1-877-GO-REELS (467-3357)
FAX 1-800-REELING (733-5464)
INT'L FAX (518) 797-3259
Website: www.hannay.com
E-mail: reels@hannay.com

ISO 66 PARTS LIST SERIES 700



**PARTS LIST
ISO-66
SERIES 700**

When ordering parts
BE SURE TO SPECIFY COMPLETE MODEL NUMBER and SERIAL NUMBER OF REEL.
USE PART NUMBER!

<u>Item No.</u>	<u>Description</u>	<u>PART NUMBER</u>	<u>Quantity</u>
1	Drum, 10-1/2" Dia. - Wrap Around (Specify Model)	9905.0138	1
1	Drum, 15-1/2" Dia. - Wrap Around (Specify Model)	9905.0178	1
1	Drum, 20" Dia. - Wrap Around (Specify Model).....	9905.0198	1
2	Front Disc, 16-17, 15-3/4" Dia. (Specify Model).....	9903.0421	1
2	Front Disc, 19-20, 18-3/4" Dia. (Specify Model).....	9903.0821	1
2	Front Disc, 23-24, 21-3/4" Dia. (Specify Model).....	9903.1121	1
2	Front Disc, 25-26, 24-3/4" Dia. (Specify Model).....	9903.1321	1
2	Front Disc, 28-29, 26-3/4" Dia. (Specify Model).....	9903.1521	1
2	Front Disc, 30-31, 28-3/4" Dia. (Specify Model).....	9903.1621	1
3	Back Disc, 16-17, 15-3/4" Dia. (Specify Model)	9903.0421	1
3	Back Disc, 19-20, 18-3/4" Dia. (Specify Model)	9903.0821	1
3	Back Disc, 23-24, 21-3/4" Dia. (Specify Model)	9903.1121	1
3	Back Disc, 25-26, 24-3/4" Dia. (Specify Model)	9903.1321	1
3	Back Disc, 28-29, 26-3/4" Dia. (Specify Model)	9903.1521	1
3	Back Disc, 30-31, 28-3/4" Dia. (Specify Model)	9903.1621	1
4	Frame Assembly, Includes Items 7, 9 & 10 (Specify Model).....	9908.0153	1
7	Front Foot (Specify Model)	9907.2000	1
9	Back Foot (Specify Model)	9907.2000	1
10	Back Brace - C Channel (Specify Model).....	9907.7000	1
11	1/2" Hub Assy, Welded Barstock (Specify Model & Riser Fittings)	9901.0631	1
13	Disc Washer w/Rivets, EH-936.....	9965.0015	1
16	3/8" - 16 Carriage Bolt w/Nut.....	Specify Model	Varies
17	Spacer Pipe	Specify Model	Varies
18A	Self Aligning Bearing Holder (Back)	9902.2800	1
18B	Self-Aligning Bearing Pillow Block (Back)	9902.2900	1
19	Self -Aligning Bearing Insert (Back)	9902.1500	1
20A	Self-Aligning Bearing Holder (Front).....	9902.2800	1
20B	Self-Aligning Bearing Pillow Block (Front).....	9902.2900	1
21	Self-Aligning Bearing Insert (Front)	9902.1500	1
22A	Ratchet Wheel	9922.0015	1
26	Ratchet Locking Assembly, GH-784	9922.0005	1
37	Spring Arbor For D Spring	9922.0001	1
37	Spring Arbor For B, C, G, & J Spring	9922.0002	1
39	Spring Mounting Bracket	9922.0009	2
40	Spring Motor, B.....	9921.0015	1
40	Spring Motor, C.....	9921.0018	1
40	Spring Motor, D.....	9921.0020	1
40	Spring Motor, G	9921.0021	1
40	Spring Motor, J	9921.0030	1
42	1/2" 90 Deg. MxF Swivel Joint.....	9927.8138	1
59	Hub Spacer.....	9954.0021	2
65	R200 Series Roller	Specify Model	1
103C	3/8" - 16 x 3/4" Spinlock Bolt.....	9904.2201	14
103D	3/8" - 16 x 3/4" Carriage Bolt.....	9904.0201	4
103E	3/8" - 16 x 1-1/4" Spinlock Bolt.....	9904.2203	4
103F	3/8" - 16 x 1-1/2" Spinlock Bolt.....	9904.2204	4
103G	3/8" FLat Washer	9954.0007	4
103H	3/8" - 16 Spinlock Nut.....	9904.6200	22
103J	1-7/8" O.D. x 1-5/16" I.D. x .049 Washer	9954.0019	1
180	Caution Decal, "Spring Under Tension".....	9922.0010	1
181	Cap-Plug for Spring (Inner Side)	9922.0036	1
182	Cap-Plug for Spring (Outer Side)	9922.0037	1
184	Dust Cap Spring	9922.0038	1