

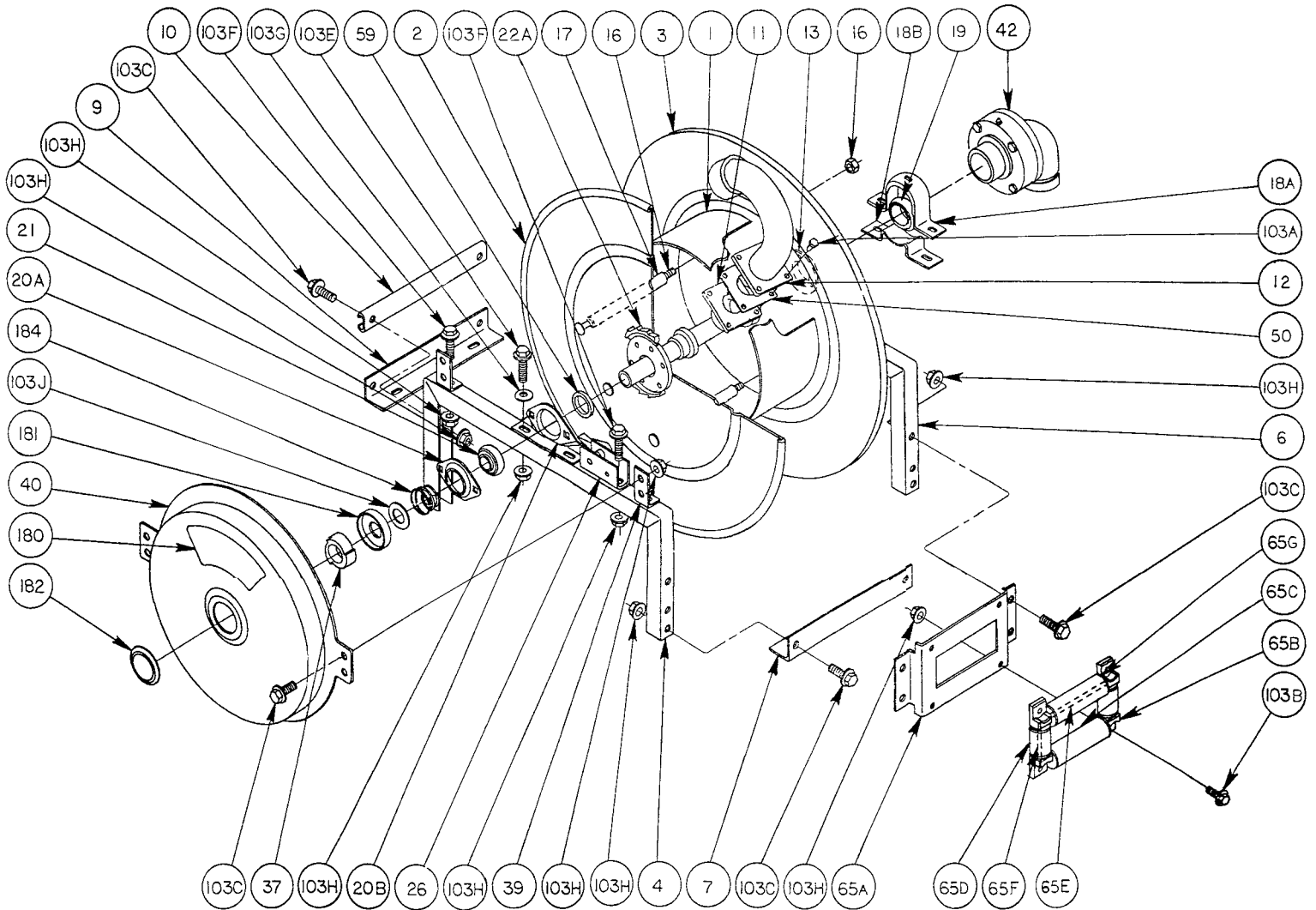


Hannay Reels®

The reel leader.

Hannay Reels, Inc., 553 State Route 143
Westerlo, NY 12193
Telephone 518-797-3791 • Toll Free 1-877-GO-REELS (467-3357)
FAX 1-800-REELING (733-5464)
INT'L FAX (518) 797-3259
Website: www.hannay.com
E-mail: reels@hannay.com

ISO 29 PARTS LIST SERIES 900



PARTS LIST
ISO 29
Series 900

When ordering parts

BE SURE TO SPECIFY COMPLETE MODEL NUMBER and SERIAL NUMBER OF REEL.
USE PART NUMBER!

Item No.	Description	<u>PART NUMBER</u>	Quantity
1	Drum, 10-1/2" Dia. (Specify Model)	9905.3131	1
2	Front Disc, 23-24, 21-3/4" Dia. (Specify Model)	9903.1121	1
2	Front Disc, 25-26, 24-3/4" Dia. (Specify Model)	9903.1321	1
2	Front Disc, 28-29, 26-3/4" Dia. (Specify Model)	9903.1521	1
2	Front Disc, 30-31, 28-3/4" Dia. (Specify Model)	9903.1621	1
3	Back Disc, 23-24, 21-3/4" Dia. (Specify Model)	9903.1121	1
3	Back Disc, 25-26, 24-3/4" Dia. (Specify Model)	9903.1321	1
3	Back Disc, 28-29, 26-3/4" Dia. (Specify Model)	9903.1521	1
3	Back Disc, 30-31, 28-3/4" Dia. (Specify Model)	9903.1621	1
4	Front Frame, 23-24	9906.0111	1
4	Front Frame, 25-26	9906.0121	1
4	Front Frame, 28-29	9906.0141	1
4	Front Frame, 30-31	9906.0151	1
6	Back Frame, 23-24	9906.0111	1
6	Back Frame, 25-26	9906.0121	1
6	Back Frame, 28-29	9906.0141	1
6	Back Frame, 30-31	9906.0151	1
7	Front Foot (Specify Model)	9907.2000	1
9	Back Foot (Specify Model)	9907.2000	1
10	Back Brace - C Channel (Specify Model)	9907.7000	1
11	1-1/2" Flanged Hub (Specify Model)	9901.3640	1
12	1-1/2" FNPT Flanged Riser	9901.3760	1
13	Disc Washer w/Rivets, EH-936	9965.0015	1
16	3/8" - 16 Carriage Bolt w/Nut	(Specify Model)	6
17	Spacer Pipe (Specify Model)	9904.3200	6
18A	Greasable Bearing Holder (Top Strap)	9902.2955	1
18B	Greasable Bearing Holder (Bottom Strap)	9902.2950	1
19	1-1/2" Bronze Bearing Insert (w/Grease Fitting)	9902.1700	1
20A	Self-Aligning Bearing Holder (Front)	9902.2800	1
20B	Self-Aligning Bearing Pillow Block (Front)	9902.2900	1
21	Self-Aligning Bearing Insert (Front)	9902.1500	1
22A	Ratchet Wheel	9922.0015	1
26	Ratchet Locking Assembly, GH-784	9922.0005	1
37	Spring Arbor For A Spring	9922.0001	1
37	Spring Arbor For B Spring	9922.0002	1
39	Spring Mounting Bracket	9922.0009	2
40	Spring Motor, A	9921.0010	1
40	Spring Motor, B	9921.0015	1
42	1-1/2" 90 Deg. FxF Swivel Joint (with Buna Seals)	9930.4210	1
42	Optional 1-1/2" 90° FxF Swivel Joint (with Viton Seals)	9930.4220	1
50	Gasket	9965.0021	1
59	Hub Spacer	9954.0021	2
65A	R300 Roller Mounting Frame (Specify Model)	A69A-00100-66	1
65B	Roller Mounting Block	9940.0075	4
65C	1-1/2" Stainless Steel Roller Tubing (Specify Length)	9940.0003	2
65D	1-1/2" Stainless Steel Roller Tubing (Specify Length)	9940.0003	2
65E	Roller Rod (Specify Length)	9940.0009	2
65F	Roller Rod (Specify Length)	9940.0009	2
65G	1-1/2" Trunion Bearing	9940.0007	8
103A	5/16" - 18 x 3/4" Hex Head Bolt	9904.1101	4
103B	3/8" - 16 X 1" Spinlock Bolt	9904.2202	4
103C	3/8" - 16 x 3/4" Spinlock Bolt	9904.2201	12
103D	3/8" - 16 x 3/4" Carriage Bolt	9904.0201	4
103E	3/8" - 16 x 1-1/4" Spinlock Bolt	9904.2203	4
103F	3/8" - 16 x 1-1/2" Spinlock Bolt	9904.2204	4
103G	3/8" Flat Washer	9954.0007	4
103H	3/8" - 16 Spinlock Nut	9904.6200	24
103J	1-7/8" O.D. x 1-5/16" I.D. x .049 Washer	9954.0019	1
180	Caution Decal, "Spring Under Tension"	9922.0010	1
181	Cap-Plug for Spring (Inner Side)	9922.0036	1
182	Cap-Plug for Spring (Outer Side)	9922.0037	1
184	Dust Cap Spring	9922.0038	1