

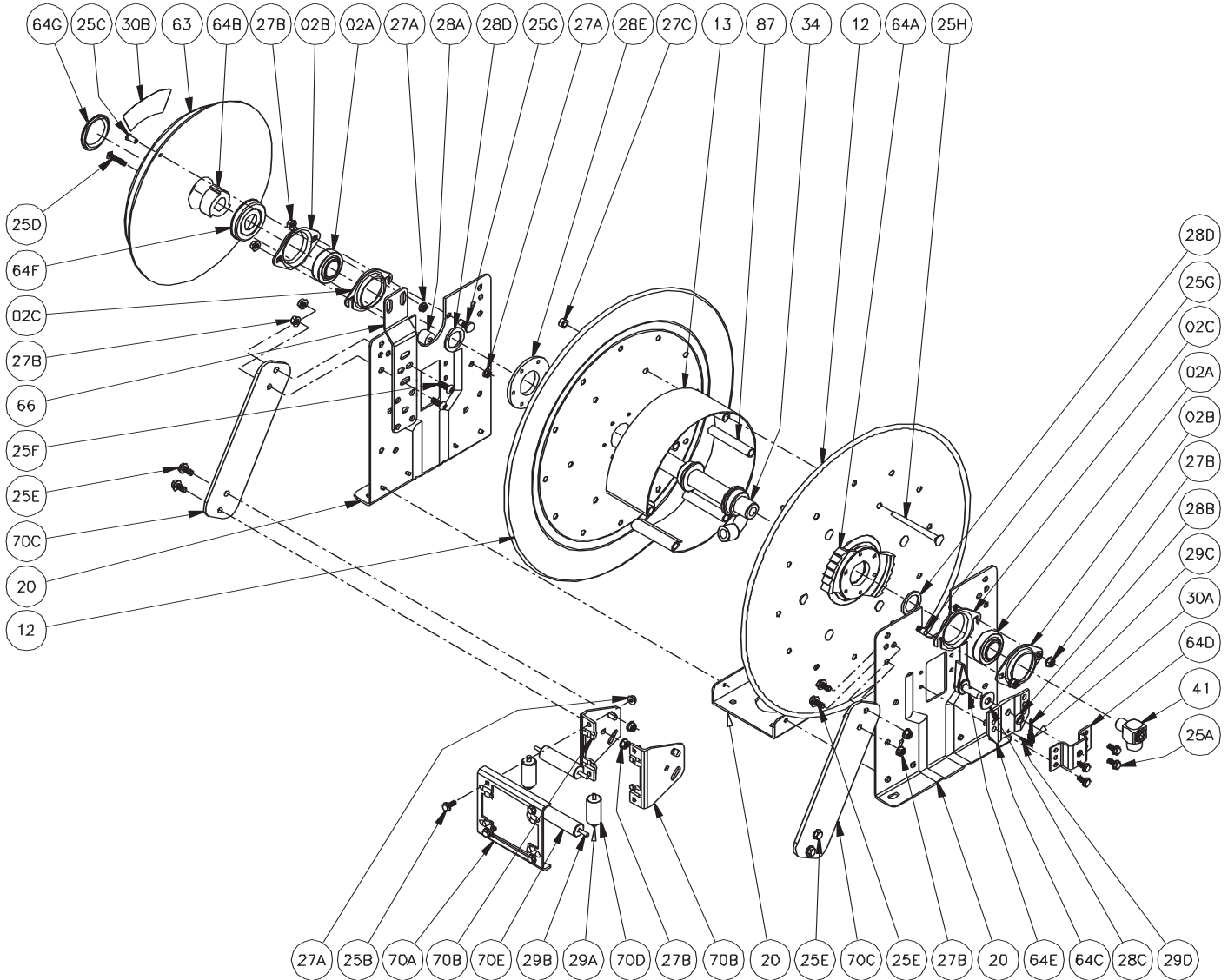


Hannay Reels®

The reel leader.

Hannay Reels, Inc., 553 State Route 143
Westerlo, NY 12193
Telephone 518-797-3791; Toll Free 1-877-GO-REELS (467-3357)
FAX 1-800-REELING (733-5464)
INT'L FAX (518) 797-3259
Website: www.hannay.com
E-mail: reels@hannay.com

ISO 79 PARTS LIST N-700 SERIES Spring Retractable Reels For Single Hose



PARTS LIST
ISO 79
N-700 SERIES

When ordering parts

BE SURE TO SPECIFY COMPLETE MODEL NUMBER and SERIAL NUMBER OF REEL.

USE PART NUMBER!

<u>Item No.</u>	<u>Description</u>	<u>PART NUMBER</u>	<u>Quantity</u>
02A	Self-Aligning Bearing Insert.....	9902.1500	2
02B	Self-Aligning Bearing Holder	9902.2800	2
02C	Self-Aligning Bearing Holder (Slotted for N Series).....	9902.2801	2
12	16-17, 15 3/4" Dia. Disc.....(Specify Model & Front, Back)	9903.0421	2
12	19-20, 18 3/4" Dia. Disc.....(Specify Model & Front, Back)	9903.0821	2
12	23-24, 22 3/4" Dia. Disc.....(Specify Model & Front, Back)	9903.1121	2
12	25-26, 24 3/4" Dia. Disc.....(Specify Model & Front, Back)	9903.1621	2
13	Drum, 10 1/2" Dia. - Wrap Around.....(Specify Model)	9905.0138	1
13	Drum, 15 1/2" Dia. - Wrap Around.....(Specify Model)	9905.0178	1
20	Frame Assembly.....	(Specify Model)	1
25A	5/16"-18 x 3/4" Thread Cutting Hex Head Bolt	9958.0055	4
25B	5/16" x 3/4" Spinlock Bolt	9904.2101	4
25C	5/16" -18 x 3/4" Hex Socket Button Head Cap Screw	9904.9101	1
25D	5/16" -18 x 1 1/2" Hex Socket Button Head Cap Screw	9904.9104	1
25E	3/8"-16 x 3/4" Spinlock Bolt.....	9904.2201	6
25F	3/8"-16 Button Socket Head Cap Screw, 1" Long.....	9904.9202	2
25G	3/8"-16 x 7/8" Panhead Knurled Bolt.....	9904.4276	4
25H	3/8"-16 x 3/4" Spinlock Bolt.....	9904.2201	as needed
27A	5/16" - 18 Spinlock Nut	9904.6100	4
27B	3/8" - 16 Spinlock Nut	9904.6200	12
27C	3/8" - 16 Hex Head Nut.....	9904.5200	6
28A	Spring Mounting Spacer (C&J)	9922.0033	1
28A	Spring Mounting Spacer (B, D, & G).....	9922.0032	2
28B	Spacer, Ratchet Pawl.....	9922.0022	1
28C	1/2" Flat Washer.....	9954.0008	1
28D	1" Hub Spacer.....	9954.0021	as needed
28E	Disc Washer.....	9965.0015	1
29A	1/4" Dia. Stainless Steel Rod, 2-3/4" Long	9940.0190	2
29B	1/4" Dia. Stainless Steel Rod.....	(Specify Model)	2
29C	1/8" x 1" Stainless Steel Cotter Pin for Pawl & Pin.....	9922.0024	1
29D	3/16" x 1" Stainless Steel Cotter Pin for N Series Ratchet.....	9922.0028	1
30A	Ratchet Locking Spring.....	9922.0008	1
30B	Spring Under Tension Caution-Decal.....	9922.0010	1
34	1/2" FNPT Welded Barstock Steel Hub Assy.....(Specify Model)	9901.0631	1
41	1/2" 90° MxF Swivel Joint	9927.8138	1
63	Spring Motor, B.....(Specify Model)	9921.0015	1
63	Spring Motor, C.....(Specify Model)	9921.0018	1
63	Spring Motor, D.....(Specify Model)	9921.0020	1
63	Spring Motor, G.....(Specify Model)	9921.0021	1
63	Spring Motor, J.....(Specify Model)	9921.0030	1
64A	Ratchet Wheel.....	9922.0015	1
64B	Spring Arbor for D Spring.....	9922.0001	1
64B	Spring Arbor for B, C, G, & J Spring.....	9922.0002	1
64C	Ratchet Pawl Housing, Inner (N Series).....	9922.0027	1
64D	Ratchet Pawl Housing, Outer (N Series).....	9922.0026	1
64E	Pawl & Pin.....	9922.0019	1
64F	Cap-Plug for Spring (Inner Side).....	9922.0036	1
64G	Cap-Plug for Spring (Outer Side).....	9922.0037	1
66	Spring Mounting Bracket (N Series).....	9922.0050	1
70A	Roller Bracket Frame.....	(Specify Model)	1
70B	N Series Roller Mounting Bracket.....	9940.0171	2
70C	N Series Roller Arm Only (Specify Model).....	9941.0030	2
70D	1" Dia. x 2" Long Roller for Stamped Housing.....	9940.0180	2
70E	1" Dia. Roller for Stamped Housing.....	(Specify Model)	2
87	Threaded Spacer Tube	(Specify Model)	as needed