

N700

SPRING REWIND REELS

To handle 1/4" through 1/2" I.D. hose.

- Standard N Series has a narrow frame and compact mounting base.
- Non sparking ratchet assembly.
- Declutching arbor to prevent damage from reverse winding.
- Standard inlet 90° balanced pressure swivel joint 1/2" female NPT threads.
- Standard outlet 1/2" female NPT threads.
- Standard Pressures to 3000 psi (207 bar) (available up to 10,000 psi 690 bar).
- Temperatures from -60° F to +250° F (-51° C to +121° C).
- Consult factory for other pressures & temps.
- 4-way roller assembly.
- Constant Tension is available – consult factory.



Shown with
Optional TR
Roller Position

For:

- Lubrication
- Air/Water
- Assembly Operations
- Washdown
- Air Tools
- General Industrial Applications

Parts Drawing – ISO 79

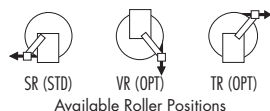
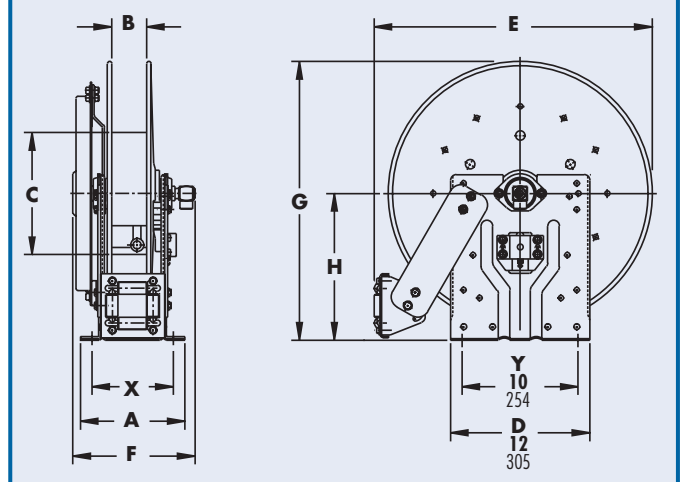
Model Number	Hose Capacity of Reel				Approx. Weight		Standard Roller Assy	Reel Dimensions***							
	feet m.				NET	Frt. SHIP Wt.		inches mm.							
	I.D. (in) I.D. (mm)	1/4" 6	3/8" 10	1/2" 13				A	B	C	E	F	G	H	X
N716-14-16-8C	–	25	25	–	52*	70	N204	10	4	8	17.62	11.25	16.25	9.12	8
	–	8	8	–	24	39		254	102	203	448	286	413	232	203
N716-16-17C	–	35	35	–	55*	71	N204	10	4	10.5	18.5	11.25	17	9.12	8
	–	11	11	–	25	32		254	102	267	470	286	432	232	203
N716-19-20J	–	50	50	–	64*	85	N204	10	4	10.5	20.75	11.25	20	10.62	8
	–	15	15	–	29	38		254	102	267	527	286	508	270	203
N716-23-24-15.5G	100	75	65	–	94*	129	N204	10	4	15.5	23.75	11.25	24	12.62	8
	30	23	20	–	43	59		254	102	394	603	286	610	321	203
N716-23-24-15.5J	–	65	65	–	79*	96	N204	10	4	15.5	23.75	11.25	24	12.62	8
	–	20	20	–	36	44		254	102	394	603	286	610	321	203
N716-25-26-15.5B	–	75	75	–	90	125	N204	10	4	15.5	25.25	11.25	26	13.62	8
	–	23	23	–	41	57		254	102	394	641	286	660	346	203
N718-25-26-15.5G	–	100	100	–	96	131	N206	12	6	15.5	25.25	13.25	26	13.62	10
	–	30	30	–	44	59		305	152	394	641	337	660	346	254

Notes:

1. Specifications subject to change.
2. Reel models and capacities shown are for standard drag applications; for vertical lift applications consult factory.
3. Other sizes, from standard components, available on request.
4. **Finish:** refer to Page 4.
5. **Be sure to check dimensions and weights prior to ordering.**

NOTICE: A Flexible Connector must be used between the inlet pipe and the inlet swivel joint.

* When shipped as a parcel package (via Fed-Ex or UPS Ground).
Net wt. plus carton wt.
*** x,y indicate mounting holes. See page 2



Available Roller Positions