

IMPORTANT: OPW products should be used in compliance with applicable federal, state, provincial, and local laws and regulations. Product selection should be based on physical specifications and limitations and compatibility with the environment and materials to be handled. OPW MAKES NO WARRANTY OF FITNESS FOR A PARTICULAR USE. All illustrations and specifications in this literature are based on the latest product information available at the time of publication. OPW reserves the right to make changes at any time in prices, materials, specifications and models and to discontinue models without notice or obligation.



OPW 101BG-2100 Series Below-Grade Spill Container (101BG-2100 101BG-2115)



OPW Below-Grade Spill Containment Manholes are used in new tank or riser pipe installations. The watertight spill containment chamber is installed completely below grade level. A grade level manhole cover lies flush with the driveway grade to reduce a tripping hazard and the potential for damage from snow plows and traffic. Surface water drains into the backfill between the manhole skirt and the exterior of the containment bucket. Below-grade spill containers are available in thread-on and slip-on configurations in 5 and 15-gallon capacities.

Features

- **Pull-to-Open Drain Valve** - Allows high-speed drainage of excess product into the tank. Designed with a convenient self-cleaning seal and removable screen for easier component cleaning. (CARB Approved)
- **Optional Hatch-Actuated Drain Valve** - As hatch is locked down, drain valve automatically opens, allowing any contained liquid to drain into tank.
- **Capacity** - 5-gallon and 15-gallon capacities.
- **Outer Shell** - The outer shell isolates the containment vessel from the surrounding concrete and gravel. This high-density polyethylene shell is designed to provide space between the outer shell and the containment vessel to allow any surface water that enters to flow into the backfill, not the containment vessel. Elimination of water in the spill container reduces product contamination and ice formation during cold winter months.
- **Vapor-Tight Lid** - A unique, hinged and sealed containment vessel lid provides a vapor-tight seal, designed to prevent vapors from escaping at ground level while eliminating the accumulation of dirt and water that contaminate fuel. Incorporating a special lid interlock design, the grade level cover cannot be replaced on the outer shell without the lever being in the closed and locked position.
- **Composite Grade Level Cover** - Made of sturdy fiberglass reinforced composite, the grade cover is less prone to theft than aluminum covers, and lighter in weight than cast iron. In addition, the cover lies flush with the actual grade so no ramps are required to support the cover, eliminating snow plow hazards and “speed bumps.” (Optional steel plate cover is also available)
- **Fuel Compatibility** - Designed to accommodate the fuels of the future, including methanol, ethanol and fuels with MTBE additives.
- **Easy Installation** - Reduces job-site time and installation costs. Simply thread the Duratuff® II base (cast iron base is optional) onto a standard 4" schedule 40 pipe. Guides are provided to assure proper positioning of the spill container. The hinged lid orientation is adjustable during

installation for site-specific placement.

- **Product Identification Tags** - Available for both the spill container cover and bucket to positively identify the product contained in the UST with standard API symbols. See product I.D. tag specification page under the "Multi-Port Spill Containment Manhole" Section for more information)
- **Highway 20 Rated (H20)** - All OPW spill containers and manholes exceed the requirements of the Highway 20 rating.

Materials:

Grade cover: fiberglass reinforced composite (steel optional)

Lid: glass reinforced composite

Lever, top case: polyethylene

Outer shell: polyethylene, powder-coated steel

Containment cell: polyethylene

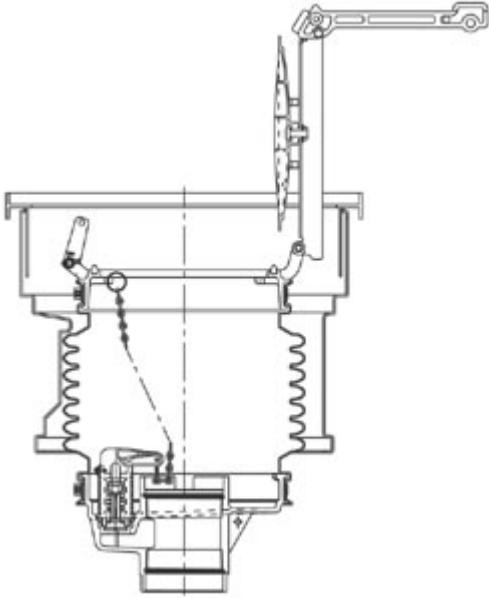
Base: Duratuff® II or cast iron

Lid and Lever Positions



Lid and lever in open position.

Diagram

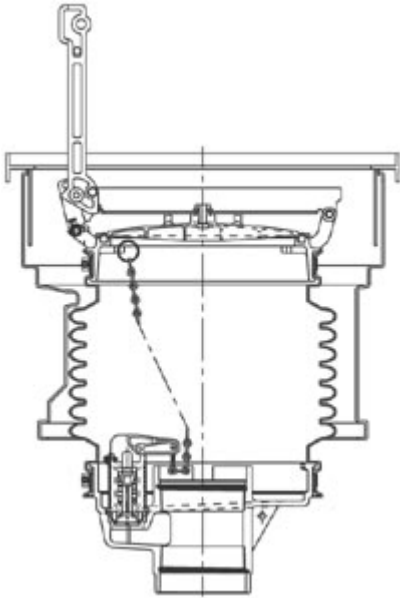


Down / Not Closed



Lid down, but not closed. Lever still in upright position preventing replacement of grade cover.

Diagram

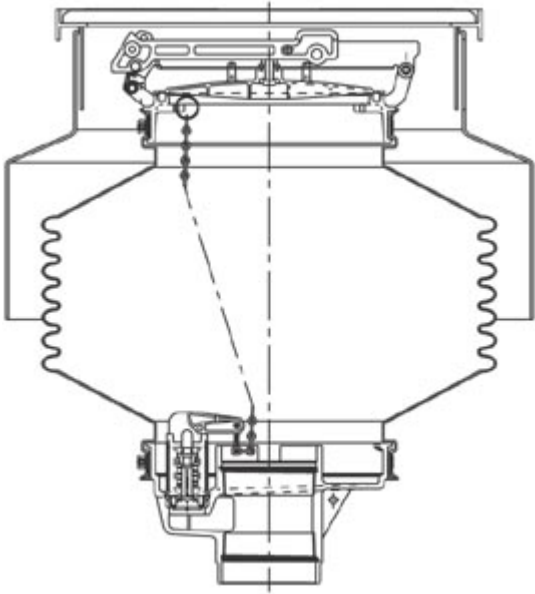


Closed and Locked



Lid and lever in closed and locked position. Grade cover now easily replaced on rim.

Diagram



CARB Certifications and Listings

101BG(S)-2100 Approval Letter

101BG(S)-2115 #93-26

Important Notice

The OPW 101BG-2100 Spill Container Series does not prevent contamination of the soil or backfill resulting from spills flowing between the spill container and the outer shell. Ground contamination may result if the spill container is filled beyond capacity, or if a spill occurs outside the spill containment cell.