

IMPORTANT: OPW products should be used in compliance with applicable federal, state, provincial, and local laws and regulations. Product selection should be based on physical specifications and limitations and compatibility with the environment and materials to be handled. OPW MAKES NO WARRANTY OF FITNESS FOR A PARTICULAR USE. All illustrations and specifications in this literature are based on the latest product information available at the time of publication. OPW reserves the right to make changes at any time in prices, materials, specifications and models and to discontinue models without notice or obligation.



OPW 60 Series Vapor Line Shear Valves (60VS-1000 60VSP-1001 60VSP-101L 60VSPC-1001 60VSK-1002 60V-1000 60VP-1001 60VP-101L 60VK-1002 60VK-1003)



OPW 60 Series Vapor Line Shear Valves are installed on vapor return lines beneath dispensers at grade level to minimize hazards associated with collision or fire at the dispenser. If the dispenser is pulled over or dislodged by collision, the top of the valve breaks free at the integral shear groove to minimize damage to the dispenser piping. Poppeted models afford additional protection by preventing the release of vapors from the dispenser's internal piping and the vapor line to the tank. The base of the Vapor Line Shear Valve is securely anchored to the concrete dispenser island through a stabilizer

bar system within the dispenser sump or pan while the valve top is secured to the dispenser structure to ensure proper shearing action. OPW Vapor Line Shear Valves are designed to meet the requirements of NFPA-30A Section 4-3.7. Poppeted models are UL and CARB-approved.

Features

OPW 60VS SERIES VAPOR LINE SHEAR VALVES

- 1 1/2" female connection to underground piping.
- 1" female connection to dispenser piping.
- Air test port to enable vapor line testing without breaking pipe connections.
- Choice of top or side inlet connection.
- Three-Point Boss Mount stabilizer bar lower mounting connection; U-Bolt upper mounting connection.

Materials

Body: cast iron with black

Duragard® coating

Discs: M-19 Viton

OPW 60VS-1000 "Line Saver"

- Shear section breaks on impact to minimize damage to underground piping.

OPW 60VSP-1001 Poppeted "Vapor Saver"

- Double-poppeted design incorporated to help prevent vapor loss in the event the dispenser is toppled.
- CARB approved.
- UL listed.
- 60VSPC-1001 features additional external threads on valve outlet for connection to a secondary containment system.

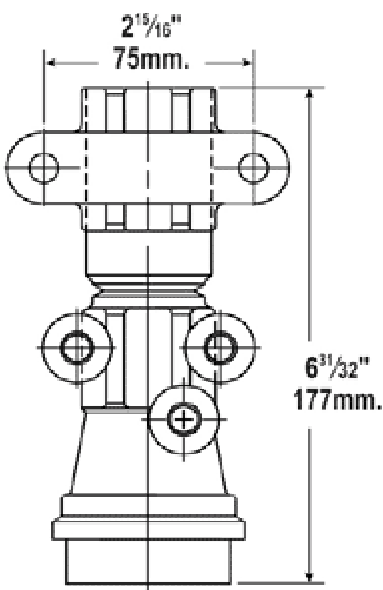
UL Listed (OPW 60VSP-1001)



Ordering Specifications

| Product No. | Connections | Poppeted | Containment Threads |
|-------------|--|----------|------------------------|
| 60VS-1000 | 1" x 1 1/2" (3 x 4 cm) FNPT | | |
| 60VSP-1001 | 1" x 1 1/2" (3 x 4 cm) FNPT | X | |
| 60VSP-101L | 1" x 1 1/2" (3 x 4 cm) FBSPP | X | |
| 60VSPC-1001 | 1" x 1 1/2" (3 x 4 cm) FNPT | X | X |
| 60VSK-1002 | Mounting Kit Includes: (2) Lockwashers, (2) Nuts (3) Hex Screws, (3) Washers | | |

Dimensions



Features

OPW 60V SERIES VAPOR LINE SHEAR VALVES

- 1" female connection to both dispenser and underground piping.
- **Multiple Mounting Methods** - Mounting Boss accepts either U-Bolt or Straight Bolt mounting kits.
- **Duragard® E-Coat Finish** - Provides superior corrosion resistance.

Materials

Body: cast iron with black

Duragard® coating

Discs: M-19 Viton

OPW 60V-1000 "Line Saver"

- Shear section brakes on impact to minimize damage to underground piping.

OPW 60VP-1001 Poppeted "Vapor Saver"

- Double-poppeted design incorporated to help prevent vapor loss in the event dispenser is toppled.
- CARB approved.
- UL listed.

The 60V Series works with the PISCES™ SBK-1200J Only

Ordering Specifications

| Product No. | Connections | Poppeted |
|-------------|---|----------|
| 60V-1000 | 1" x 1" (3 x 3 cm) FNPT | |
| 60VP-1001 | 1" x 1" (3 x 3 cm) FNPT | X |
| 60VP-101L | 1" x 1" (3 x 3 cm) FBSPP | X |
| 60VK-1002 | U-Bolt Mounting Kit Includes: (2) 3/8" (9.5 mm) u-bolts, (4) washers, (4) nuts | |
| 60VK-1003 | Straight Bolt Mounting Kit Includes: (4) 3/8" (9.5 mm) 16 bolts, (4) washers, (4) nuts | |

Dimensions

