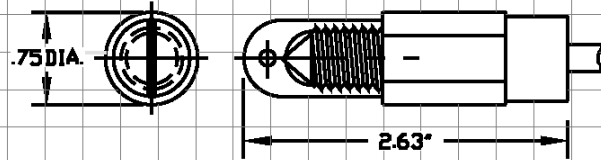


## Solid-State, Electro-Optic Secondary Containment Leak Sensor with Fault Detection



### Outline Specifications



### Product Description

The Model ES825-100 Series is a solid-state, electronic leak sensor utilizing electro-optic technology to detect the presence of liquids in secondary containment applications. The sensor contains no moving parts, is unaffected by vapors, and due to its compact size is ideal for interstitial spaces. When connected with a TMS series controller, the ES825-100 Series supports Pneumercator's FAULT-DETECT supervised wiring technology, which automatically detects sensor or field wiring faults.

### Applications

- Dry Annular Space in Double-Wall Tanks
- Containment, Manway and Piping Sumps
- Dispenser Pan
- Turbine Enclosures

### Specifications

- Technology: Electro-optic, no moving parts
- Wetted Materials: Polysulfone, PVC (F), FEP Teflon (XF), Epoxy and 316SS
- Operating Temperature:  $-5^{\circ}$  to  $+165^{\circ}$ F ( $-20^{\circ}$  to  $+75^{\circ}$  C) (F);  $-65^{\circ}$  to  $+185^{\circ}$ F ( $-55^{\circ}$  to  $+85^{\circ}$  C) (XF)
- Cable: 22AWG, 3-Conductor, PVC-jacketed, (FEP Teflon-jacketed for XF), 25' Length
- Pass-thru Opening Size: Minimum  $\frac{3}{4}$ " NPT
- Location Approval\*: UL Class I, Div 1, Groups C and D

### Installation

Sensor may be suspended by its cable, placed on the containment or sump floor, or thru-wall mounted via a  $\frac{1}{4}$ " FNPT opening. For dry annular applications, sensor may be pulled through using fish tape attached to sensor pull ring, or pushed through with a section of  $\frac{1}{2}$ " ENT (not included) attached to the back end of the sensor.

### Certifications/Approvals

- UL Approved, File #E139464, CSA approval pending
- Third-Party EPA Listed\*

### Ordering

- ES825-100F PVC-Jacketed Cable
- ES825-100XF FEP Teflon-Jacketed Cable, Extended Temperature Range

\*When used in conjunction with the TMS series controllers

Note: Specifications subject to change without notice. 6-13-2006