

1600ANF

The OPW 1600ANF Series Adaptors are designed specifically for applications using an ASME flange.

The OPW 1673ANF, 1674ANF and 1676ANF Dry Disconnect Adaptors keep hazardous chemicals and vapors in-line and out of the environment.

Rugged, yet quick and easy to install, the 1600ANF Series is ideal for closed-loop loading conversions.

Benefits

- **Spill Prevention** – The poppet-actuated design can only be opened with a Kamvalok® coupling; designed to provide a tight seal when closed.
- **Easy Access Connection** – Provides easy connection access for tank cars, tank trucks, intermodal tanks, and in-process operations.
- **Connects with D2000™ Actuating Coupler or Kamvalok® 1700 Series Dry Disconnect Couplings.**
- **Easy Cleaning** – Can be quickly disassembled.
- **Specifically designed for applications using ASME flanges.**

Features

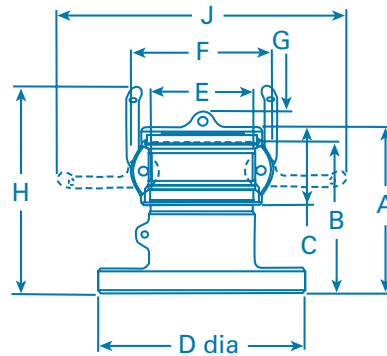
- **Heavy-Duty Construction** – Stainless Steel corrosion resistance, comparable to 304 Stainless Steel.
- **Available with raised face flange or optional tongue and groove design.**
- **Spring-Loaded Poppet Design** – Assures fast closing and tight seal.
- **Available in a Range of Seals** – Teflon®, EPT, Chemraz®, Buna-N and Viton®.
- **Available in 1 1/2", 2", and 3" sizes.**

Ordering Specifications

Stainless Steel Adaptors - 150 Lb. ASME RF Flange

Prod. No.	Size/Description
1672ANF-SS15	1-1/2" Viton® Seal, SST Adaptor* w/2" Flange
1672ANF-SS20	2" Viton® Seal, SST Adaptor* w/2" Flange
1672ANF-SS30	3" Viton® Seal, SST Adaptor* w/3" Flange
1673ANF-SS1515	1-1/2" Teflon® Silicone Seal, SST Adaptor* w/1-1/2" Flange
1673ANF-SS15	1-1/2" Teflon® Silicone Seal, SST Adaptor* w/2" Flange
1673ANF-SS20	2" Teflon® Silicone Seal, SST Adaptor* w/2" Flange
1673ANF-SS30	3" Teflon® Silicone Seal, SST Adaptor* w/3" Flange
1674ANF-SS15	1-1/2" EPT Seal, SST Adaptor* w/2" Flange
1674ANF-SS20	2" EPT Seal, SST Adaptor* w/2" Flange
1674ANF-SS30	3" EPT Seal, SST Adaptor* w/3" Flange
1676ANF-SS15	1-1/2" Chemraz® Seal, SST Adaptor* w/2" Flange
1676ANF-SS20	2" Chemraz® Seal, SST Adaptor* w/2" Flange

* Stainless Steel Corrosion Resistance is comparable to 304 SST.
316 SST Corrosion Resistance available upon request.



1673ANF and 1673ANFT

SIZE IN INCHES (1672ANF)

	1/2 x 2"	2"	3"
A Overall Length	4-47/64"	4-29/32"	6-9/16"
B Length of Body	4-13/32"	4-31/64"	6-1/8"
C Length of Cap	2-5/64"	2-1/4"	2-5/16"
D Diameter of Flange	6"	6"	7-1/2"
E Diameter of Body	2-1/2"	3"	4-45/64"
F Width of Cap	3-9/16"	4-1/16"	5-33/64"
G Hght of Chain Lug	1/2"	7/16"	1/2"
H Length with Arms	6-1/32"	6-3/32"	8-1/8"
Number of Bolt Holes	4	4	4
Diameter of Bolt Holes	3/4"	3/4"	3/4"
Diameter of Bolt Circle	4-3/4"	4-3/4"	6"
J Max width of Arms	7-1/8"	8"	11-3/32"

SIZE IN INCHES (1672ANFT)

	2"	3"
A Overall Length	5-5/32"	6-13/16"
B Length of Body	4-47/64"	6-6/8"
C Length of Cap	2-1/4"	2-5/16"
D Dia. of Flange	6-1/2"	8-1/4"
E Dia. of Body	2-63/64"	4-45/64"
F Width of Cap	4-1/16"	5-33/64"
G Height of Chain Lug	7/16"	1/2"
H Length with Arms	6-21/64"	8-3/8"
Number of Bolt Holes	8	8
Diameter of Bolt Holes	3/4"	7/8"
Diameter of Bolt Circle	5"	6-5/8"
J Maximum width of Arms	8-9/32"	11-3/32"

Prod. No. Size/Description

1676ANF-SS30	3" Chemraz® Seal, SST Adaptor* w/3" Flange
1677ANF-SS15	1-1/2" Teflon® Viton® Seal, SST Adaptor* w/2" Flange
1677ANF-SS20	2" Teflon® Viton® Seal, SST Adaptor* w/2" Flange
1677ANF-SS30	3" Teflon® Viton® Seal, SST Adaptor* w/3" Flange
1679ANF-SS15	1-1/2" Viton®-B Seal, SST Adaptor* w/2" Flange
1679ANF-SS20	2" Viton®-B Seal, SST Adaptor* w/2" Flange
1679ANF-SS30	3" Viton®-B Seal, SST Adaptor* w/3" Flange

Stainless Steel Adaptors - 300 Lb. ASME Tongue & Groove Flange

Prod. No. Size/Description

1674ANFT-SS20	2" EPT Seal, SST Adaptor* w/2" Flange
1674ANFT-SS30	3" EPT Seal, SST Adaptor* w/3" Flange
1676ANFT-SS20	2" Chemraz® Seal, SST Adaptor* w/2" Flange
1676ANFT-SS30	3" Chemraz® Seal, SST Adaptor* w/3" Flange