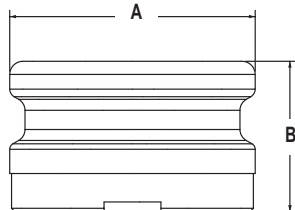


OPW Tight-Fill Top-Seal Adaptors

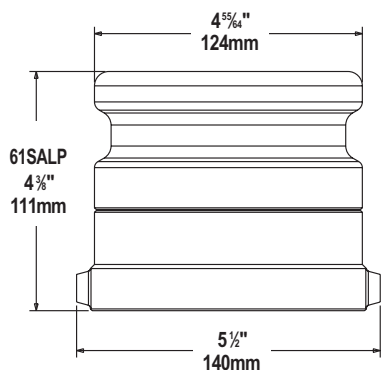
Tight-Fill Top-Seal Adaptors are installed in spill containment manholes on the fill riser pipe from an underground fuel storage tank. They mate with the gravity drop delivery elbow on the transport truck.



OPW 633T-8076



OPW 61SALP-1020-EVR



OPW 633T

OPW 633T Top-Seal Adaptors thread onto the fill pipe of underground storage tanks, and are designed to mate with top-seal delivery elbows. Use OPW 634TT, 634TE or 634TTP Top-Seal Caps with 633T Adaptors.

Features

- ◆ **Easy Installation** – Integral internal wrenching lugs are provided for installing in the confined space of spill containers.
- ◆ **Accommodate 633LC Lock Clamp** – 4" x 4" 633T (E) models incorporate dual notches in the base to accept 633LC Clamps.
- ◆ **Manufactured from Durable, Corrosion-Resistant Materials** – Bronze, hardcoat aluminum and composite Duratuff®.

Ordering Specifications

Product #	Elbow Size	Riser Thread	A		B		Material	Replacement Parts			
			in.	mm	in.	mm		lbs.	kg	Part #	Description
633T-8060	3"	3"	3 ¹ / ₂	41	1 ¹ / ₂	92	0.96	.44	Bronze	H05289M	Gasket
633T-8070	3"	4"	3 ¹ / ₂	68	2 ¹ / ₁₆	92	0.71	.32	Hardcoated AL.	H04150M	Gasket
633T-8075	4"	4"	4 ⁵ / ₆₄	75	2 ³ / ₂	124	0.82	.37	Hardcoated AL.	H04150M	Gasket
633T-8076	4"	4"	4 ⁵ / ₆₄	75	2 ³ / ₂	124	2.70	1.23	Bronze	H04150M	Gasket

Note: Maximum height of adaptor is 2¹/₁₆" (68mm).

OPW 61SA Swivel Adaptor

Pressure decay testing of underground storage tank systems has identified the joint between the tight-fill adaptor and the nipple or tank riser as a persistent leak point. Considerable movement takes place along the hose while the fill elbow is connected. Walk-downs and changes from one compartment to another move the hose across the pavement, rotating the elbow along with it. The result can be a loosening of the adaptor. As the adaptor backs off, the seal between it and the nipple is relaxed and a leak path is created allowing vapors to escape to the atmosphere. Vacuum-assist dispensing systems can aggravate this situation due to the slight pressurization of the UST.

The 61SA Swivel Adaptor mates with 4" top-seal delivery elbows and features a top section that rotates with hose movement while the bottom section remains securely in place maintaining seal integrity.

Features

- ◆ **Dual Seals** – ensure a vapor and liquid-tight seal.
- ◆ **Same Internal Dimension as Standard 633T Adaptors** – to minimize pressure drop and maximize flow rates for quick product delivery.
- ◆ **Conductive, Self-Lubricating Retaining Rod** – ensures maintenance-free, reliable service life.

Ordering Specifications

Product #	Base Material	Adaptor Material	Weight lbs.	Weight kg
61SALP-020-EVR*	Bronze	Bronze	7.1	3.2
61SA-Tool	Wrench		11.0	5.0
H09039M	Replacement Gasket			

*Low Profile Fill Adaptor

Materials

Adaptor: bronze
Base: bronze
Retaining ring: conductive nylon
Set screws: stainless steel
Seals: Buna-N

Listings and Certifications



Look for this label for authentic OPW EVR Approved products.

USA Patent No. 5,664,951

Mascott Equipment Co

Portland

Seattle

Pasco

(800) 452-5019

(800) 481-7311

(888) 450-7867